

SHOWLED CLASSIC

TECHNICAL DATA SHEET

September 2022

ShowLED Classic drapes combine twinkling LEDs with inherently flame-retardant Molton CS fabric and IFR DekoTaft lining. For easy panel joining in any direction, the black LED curtains are finished with hook & loop fastener on all four sides. The perforated fastener also allows for handy mounting of the drapes using cable ties (not included).

All blu-ish white LEDs are randomly placed in cluster formation of ± 6 LEDs per m^2 to form sparkling star constellations.

Standard sizes: 4x6m, 4x9m and 5x7m (other sizes / shapes / fabrics on request).

» COMPONENT PARTS



1. LED Socket



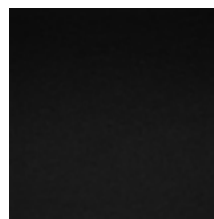
2. Single Coloured LED "Spark"



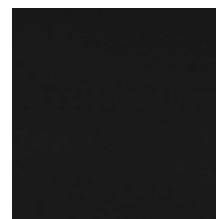
3. LED Strings



4. Controller



5. Molton CS



6. DekoTaft

Name	Information
1. LED Socket	<ul style="list-style-type: none"> • High quality bluish/white LEDs • Replaceable pull-and-push LEDs • Wide viewing angle
2. Single Coloured LED "Spark"	<ul style="list-style-type: none"> • Single Coloured LEDs available in White, Red, Green, Blue, Orange • 3 mm LEDs with built-in resistors
3. LED Strings	<ul style="list-style-type: none"> • Hook and loop fastener • Ultra flexible • Strings of 12 or 16 LEDs • Male/female connectors not included
4. Controller	<ul style="list-style-type: none"> • 8 output channels (for max. 512 single colour LEDs) • Stand-alone mode with Chase Patterns and Effects Memory • DMX-compatible (cable optional) • Dimensions 140 x 135 x 43 mm • Weight: 455 g
5. Molton CS	<ul style="list-style-type: none"> • Width: 300 cm / Length: ± 60 m / Weight: 320 g/m² • Composition: 100% PES • FR standard: NF P 92-503 / M1, BS 5867 PART 2B (2008) / pass, DIN 4102 / B1, NFPA 701 (2019) / pass, GB 8624-2012 / B1, AS 1530.3-1999, AS 1530.2-1993 • Fastness to light: DIN EN ISO 105 • Note 5 for both sides • Colour fastness to chlorinated water: EN ISO 105 - E03:2010 • 0007 (black): note 4-5 • Fastness to rubbing (wet & dry): Dry raised: rating 3 • Wet raised: rating 4-5 Dry unraised: rating 3 • Wet unraised: rating 4-5
6. DekoTaft	<ul style="list-style-type: none"> • Width: 310 cm / Length: ± 100 m / Weight: 66 g/m² • Composition: 100% PES FR • FR standard: NFP-M1 • Tear strength: ISO13937-1 2000 • Warp: 11 N - Weft: 18 N • Tensile strength: ISO13934-1 2013 • Warp: 360 N - Weft: 500 N