

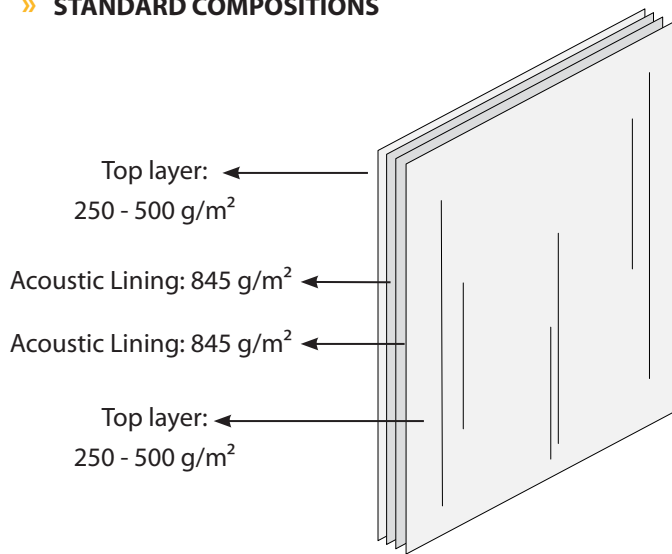
MULTI-LAYERED CURTAIN

TECHNICAL DATA SHEET

August 2018

Our specially developed separation curtains are the ideal solution to reduce noise transmission. The heavy and yet flexible lining has great insulating properties, while the outer top layer(s) not only give this multi-layered curtain its luxurious appearance, but also contribute to better room acoustics.

» STANDARD COMPOSITIONS

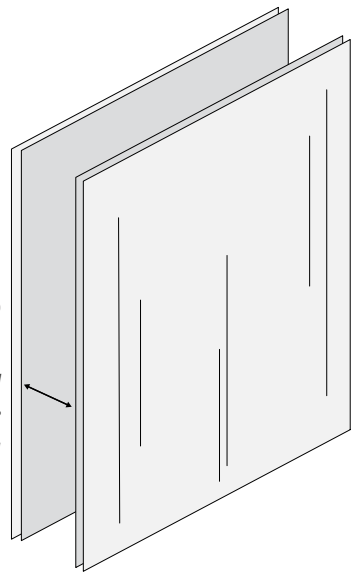


4-LAYERED CURTAIN

4 fabrics mounted as one element.

2 x 2-LAYERED CURTAIN

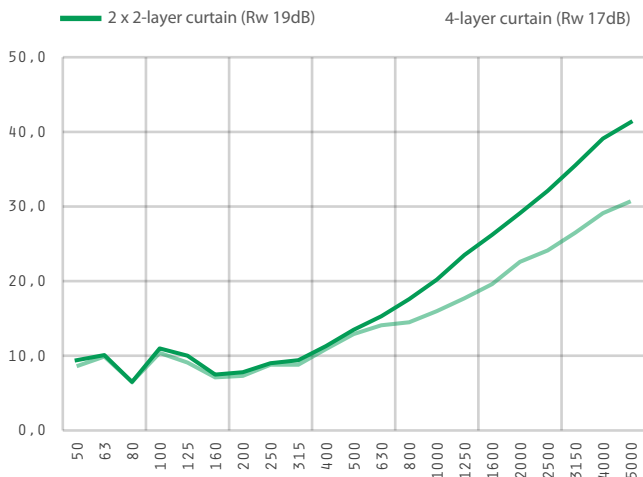
4 fabrics mounted as 2 separate elements using a 10 cm air cavity.



From 2 to 4 layers, choose the right amount of layers according to the level of sound reduction it will provide.

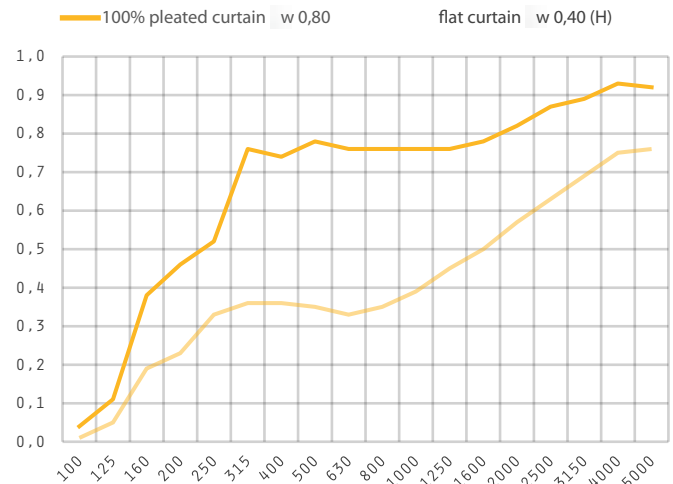
» SOUND REDUCTION ACCORDING TO EN ISO 10140-2

Sound insulation tests were carried out with an mdf frame on the left, right & top; curtains in contact with floor.



» SOUND ABSORPTION ACCORDING TO EN ISO 345

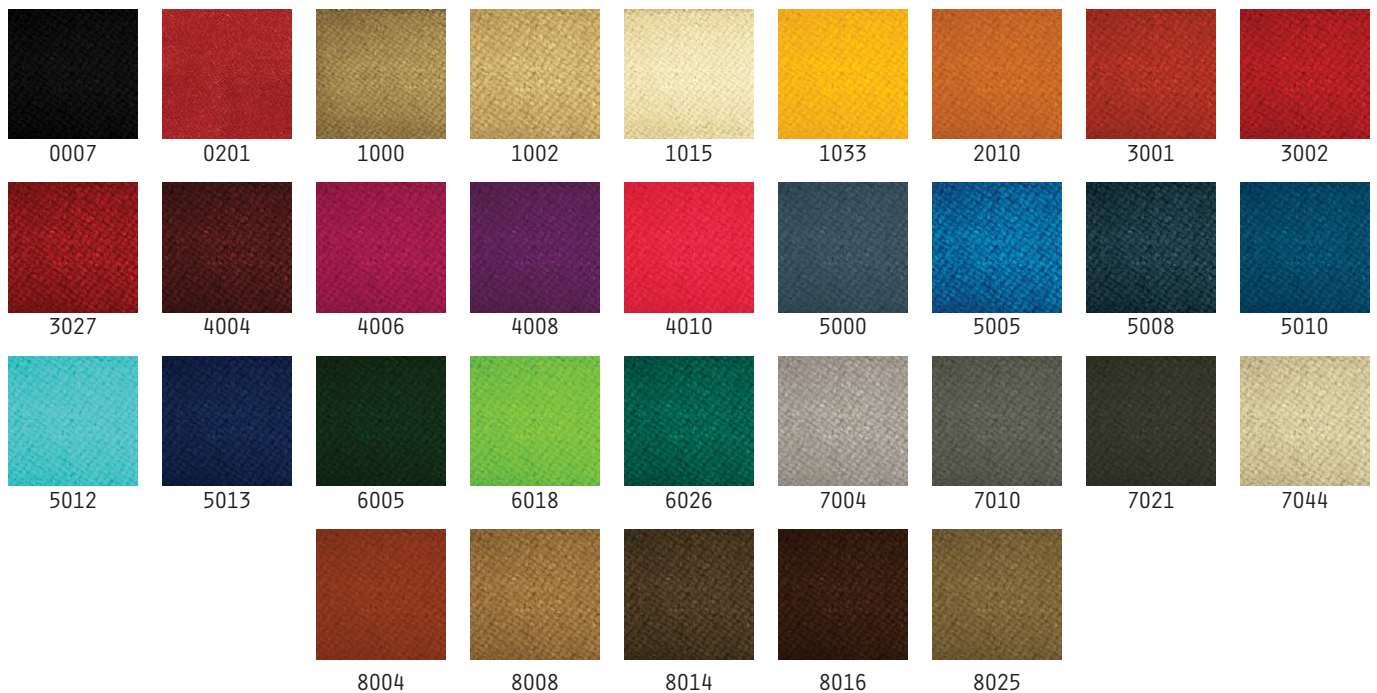
Sound absorption tests were carried out using a 2-layer curtain.



MULTI-LAYERED CURTAIN

ShowTex offers 2 fabrics to be used as a visual top layer. Opt for a polyester Velours or Blackout Double according to your aesthetic preference. Both fabrics are subject to minimal shrinkage and have sound-absorbing properties.

» AVAILABLE COLOURS




» AVAILABLE COLOURS BLACKOUT DOUBLE



MULTI-LAYERED CURTAIN

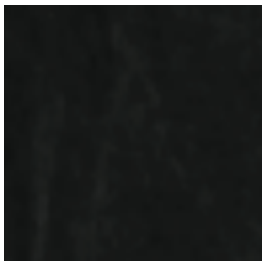
The Acoustic Lining is a composite textile that is as a result of its specific composition, not only sufficiently heavy, but also flexible enough to sew it into a curtain.

» ARTICLE CODE 1385 0138 ####	» WIDTH 140 cm	» LENGTH ± 30 m	» WEIGHT 845 g/m ²
» COMPOSITION 72% PVC IFR + 16 % PES + 12 % MNF	» CARE INSTRUCTIONS 		

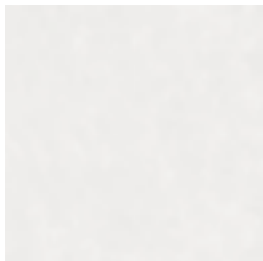
! Do not use solvents, solvent cleaning agents or concentrated abrasives.

» FLAME RESISTANCE EN 13773 (2003)	CLASS 1
--	---------

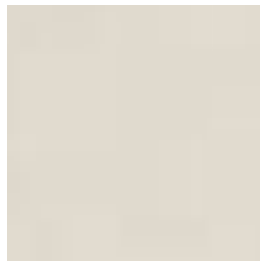
» AVAILABLE COLOURS



0007



0003



0013

SHOWTEX ACOUSTICAL SOLUTIONS
MORE INFO ON WWW.SHOWTEX.COM