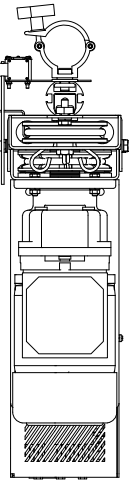
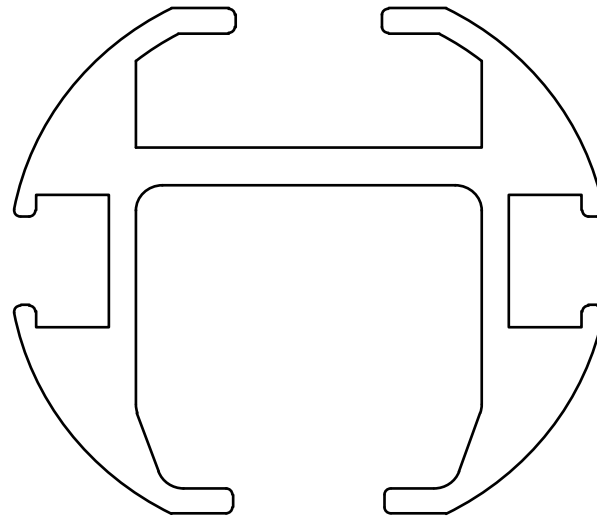


SHOWPIPE

RTD 1500 MOTORISED MOVEMENT WITH ROPE



DISCLAIMER & COPYRIGHT

No part of this publication may be duplicated or edited in any form or by any means, including any type of electronic or mechanical method without prior written permission from ShowTex.



ShowTex NV and its employees are fully aware of their task to provide a reliable edition of this document. Nevertheless they can accept no liability for (the direct or indirect consequences of) imperfections that might remain in this edition. The material in this manual is subject to change without notice.

All products from the ShowTex Rental range are supposed to be returned in the same state as they were rented. Please treat our products with care, allowing the next user to enjoy the products as much as you did. The rented products are internally checked according to the general rental conditions. Be sure to check our rental guidelines on our website before installing and using this product:

<http://www.showtexrental.com/showtex-rental-guidelines>.



Read and understand this user manual before installing and or operating the automatic reveal system. Failure to follow the instructions in this document could result in serious injury!



As a result of the above warning, any ShowTex product must be installed and operated by a qualified technician who has knowledge of its capabilities as well as its limitations.

Following the guidelines of this manual will reduce the risk of damaging the equipment or injuring yourself and the people around you. Damage to the system caused by any other method of installation than the one shown in this manual can only be repaired or fixed at the customer's expense.

CONTENT

Disclaimer & copyright•.....	2
Intro•.....	3
Warranty•.....	3
Product description•.....	3
Safety instructions•.....	3
Max. load & distance•.....	4
Technical specifications•.....	5
Components•.....	5
Assembled single-track central overlap•.....	9
Front, top and bottom plan view•.....	9
Side and exploded view•.....	10
Assembled double-track central overlap•.....	11
Front, top and bottom plan view•.....	11
Side and exploded view•.....	12
Alternative mounting options•.....	13
Using metric thread•.....	13
Using ceiling clips•.....	13
Installation•.....	14
Necessary steps•.....	14
Necessary tools•.....	14
How to...•.....	15
Determine number of attachment points & distance between them•.....	15
Secure mounting brackets•.....	16
Secure joiner set•.....	16
Insert one runner between two end stops•.....	16
Prepare the rtd unit: single-track configuration •.....	17
Prepare the rtd unit: double-track configuration •.....	17
Install RTD unit•.....	18
Install control unit•.....	18
Insert runners and / or master carriers•.....	18
Insert 2nd end stop or a runner between 2 end stops•.....	18
Install return pulley•.....	19
Install line pickups•.....	19
Install limit switches•.....	19
Positioning the limit switches: single-track configuration •.....	20
Positioning the limit switches: double-track configuration •.....	20
Guide the double-braided rope•.....	21
Secure the double-braided rope•.....	21
Connect the limit switches, rtd unit and remote control•.....	23
Connect the limit switches, rtd unit and remote control for dmx setup•.....	24
Set up the dmx module•.....	25
Install the curtain•.....	26
Care and maintenance•.....	27
Trouble shooting•.....	27
Contact & support•.....	27

INTRO

Thank you for purchasing a ShowTex product.

Please take a moment to read this manual before installing or starting to use your new curtain track system. It contains important information regarding health and safety regulations and will guide you through the installation process safely and will show you how to use the system without injuring yourself or the people around you.

WARRANTY

ShowTex warrants that its mechanical/technical products, when delivered in new condition, in original packaging, sold directly and used in normal conditions, are free from any defects in manufacturing, materials and workmanship. The warranty shall only apply if the mandatory preventive maintenance actions as described in the technical documentation have been executed by skilled people. Warranty starts on invoice date for a period of 24 months.

Please read the entire warranty declaration on our website www.showtex.com before installing & using this product.

PRODUCT DESCRIPTION

ShowPipe is a more sturdy aluminium version of the H100 track with the same characteristics. This rail system is easy to assemble and fast to rig. ShowPipe slides into our 50 mm aluminium tube and can thus be integrated seamlessly into our EasyDrape system. Wherever curtain movement is wanted, the tracks can be custom-curved on demand. This track system is compatible with our range of Rope Track Drivers, They can be used to electronically control the movement of the curtain.



Note: this manual only covers the motorised rope-controlled ShowPipe rail system using an RTD 1500 motor unit.

SAFETY INSTRUCTIONS



Do not exceed the maximum carrying capacity of the track and its components. Be sure to check if the capacity of the suspension points corresponds to the weight of the track and the items to be suspended from the track. **(see chapters 'technical specifications' and 'max. load & distance')**

Do not exceed the maximum distance between each suspension point. Provide extra points in the curtain storage area to support the accumulated weight of the curtain when gathered together. Refer to the technical datasheet for more detailed information. **(see chapter 'max. load & distance')**

Do not allow any item to be operated or used when in doubt about the safety or good working order to avoid accidents and injuries. Most accidents are the result of lack of training, carelessness and overconfidence, do not assume anything.

Do not use this rail system for any other purpose than hanging and moving stage curtains or light-weight decorative elements. Only combine this rail system with parts and accessories from the ShowTex curtain track range.

Disassembly must be carried out under the same conditions and following the same steps as assembly but in reverse order. Remove all curtains or other suspended items before removing tracks from their permanent location. Disconnect all parts before removing tracks. Never remove in one piece.



To prevent electrocution and contact with moving parts, disable the power supply before carrying out any work on the units.

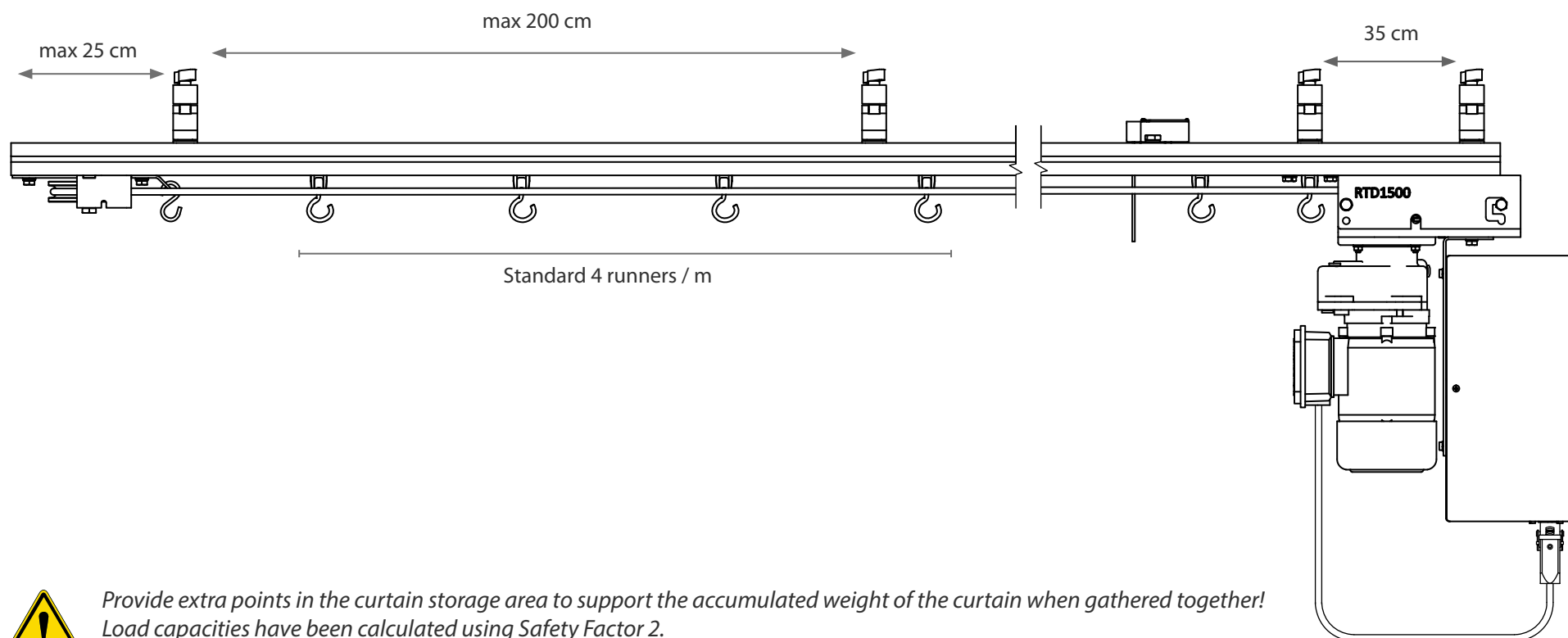
RTD units must be installed with a corresponding earth wire of the same section as the power cable. Installation and operation must take place in a dry frost-free environment.

A sudden unexpected start-up of the system by not disabling the power in both the standard and RTD units causes a risk to the operator.

Be aware that the motion system keeps moving as long as the power is on. If a problem occurs, anything in its path can cause damage to the moving curtain until the master or overlap carriers reach the limit switch or the motor unit is shut down.

MAX. LOAD & DISTANCE

Never exceed the maximum distance and approved loads shown in the drawing and graph on this page.



*Provide extra points in the curtain storage area to support the accumulated weight of the curtain when gathered together!
Load capacities have been calculated using Safety Factor 2.
Apply the required Safety factor according to the standards pertaining to your application.*

Art. No	Description	SWL	Point load between 2 m suspension points	Uniformly distributed load between 2 m suspension points
8055 0001 6007	Track section	x	68 kg	120 kg
8050 0205 0087	Ball-raced runner	8 kg	x	x
8050 0221 0167	Master carrier	15 kg	x	x
8050 0230 0001	Scenery carrier	60 kg	x	x

TECHNICAL SPECIFICATIONS

COMPONENTS

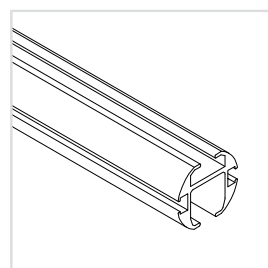
The motorised ShowPipe rail system consists of the following components.

CAUTION! The components included in your shipment depend on the specific situation in which you want to use this system.

For more detailed information, please refer to the technical datasheet.

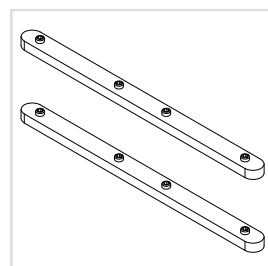
LEGEND

/m	Weight per metre
/p	Weight per piece
/s	Weight per set



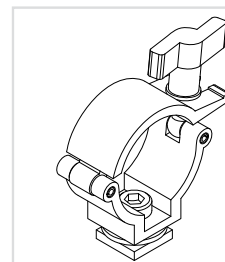
1. TRACK

Art. No.	Colour	Weight	Info
8055 0001 6007	Black	1.31 kg/m	6m



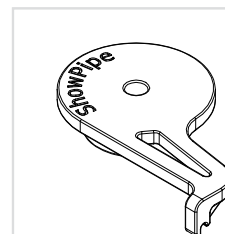
2. JOINER SET

Art. No.	Colour	Weight	Info
8055 0042 1507	Black	0.11 kg	2 pieces



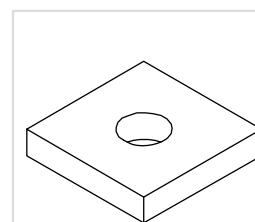
3. HALF COUPLER CLAMP + SQUARE CHANNEL NUT

Art. No.	Colour	Weight	Info
8055 0680 0757	Black	0.40 kg/p	75 kg Fits 48/51 mm diameter tubes.



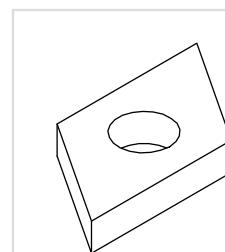
4. HIDDEN CEILING CLIP

Art. No.	Colour	Weight	Info
8055 0110 0017	Black	0,004 kg/p	Leave maximum 1 metre distance between the clips.
SWL			
10 kg			



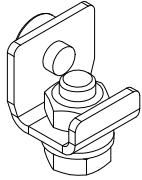
5. SQUARE CHANNEL NUT

Art. No.	Colour	Weight	Info
8055 9224 0007	Inox	0,003 kg/p	For use in com- bination with threaded rod.



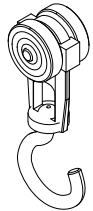
6. DIAMOND-SHAPED CHANNEL NUT

Art. No.	Colour	Weight	Info
8700 9224 0011	Inox	0,001 kg/p	For mounting limit switches & line pick ups onto the rail.



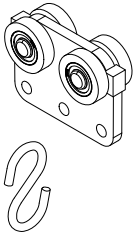
7. END STOP

Art. No.	Colour	Weight	info
8050 0050 0001	Galvanised	0.03 kg/p	



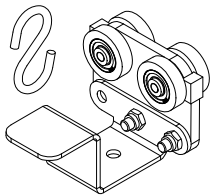
8. BALL-RACED RUNNER

Art. No.	Colour	Weight	Info
8050 0205 0087	Black	0.03 kg/p	8 kg



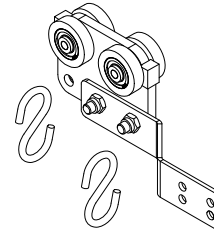
9. BALL-RACED MASTER CARRIER

Art. No.	Colour	Weight	Info
8050 0221 0167	Black	0.05 kg/p	15 kg



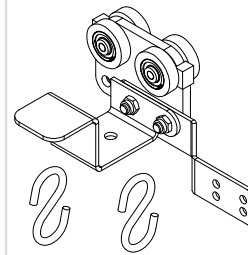
10. MASTER CARRIER FOR USE WITH MOTOR

Art. No.	Colour	Weight	SWL
8050 0228 0167	Black	0.12 kg/p	15 kg



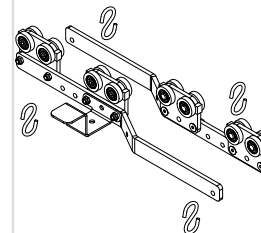
11. SHORT OVERLAP CARRIER

Art. No.	Colour	Weight	SWL
8050 0245 0057	Black	0.09 kg/p	15 kg



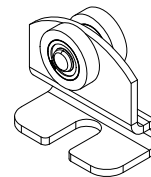
12. SHORT OVERLAP CARRIER FOR USE WITH MOTOR

Art. No.	Colour	Weight	SWL
8050 0245 1057	Black	0.09 kg/p	15 kg



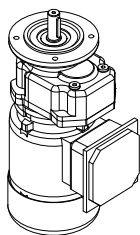
13. OVERLAP CARRIER SET FOR USE WITH MOTOR

Art. No.	Colour	Weight	SWL
8050 0246 1167	Black	0.82 kg/p	15 kg



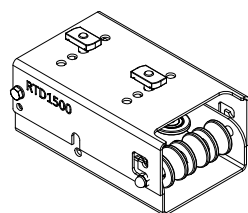
14. SCENERY CARRIER

Art. No.	Colour	Weight	SWL
8050 0230 0001	Galvanised	0.11 kg/p	60 kg



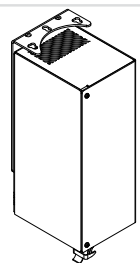
15. RTD 1500

Art. No.	Colour	Weight	Info
8050 0713 2257	Black	11.8 kg/p	120W 230/400V 0.95/0.55A



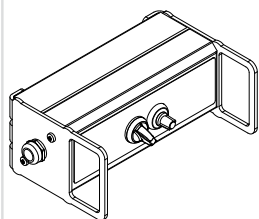
16. ROPE TRANSMISSION

Art. No.	Colour	Weight	Info
8050 0400 0017	Black	-	-



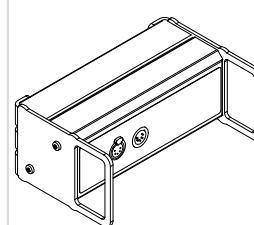
17. CONTROL UNIT RTD 1500

Art. No.	Colour	Weight	Info
8050 0751 1507	Black	11.8 kg/p	



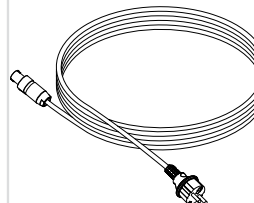
18. REMOTE CONTROL

Art. No.	Colour	Weight	Info
8050 0766 0040	Black	5.4 kg/p	2 m link cable included.



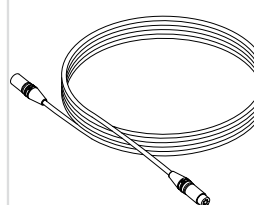
19. REMOTE CONTROL DMX MODULE

Art. No.	Colour	Weight	Info
8050 0766 0300	Black	1.92 kg/p	2 m power cable + 2m link cable included.



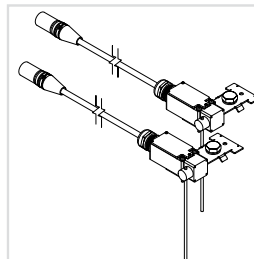
20. POWER CABLE

Art. No.	Colour	Weight	Length
8150 0912 0027	Black	0.44 kg/p	2 m



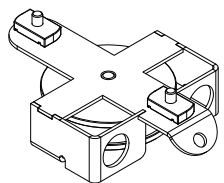
21. EXTENSION CABLE

Art. No.	Colour	Weight	Length
8140 7202 2500	Grey	0.44 kg/p	25 m



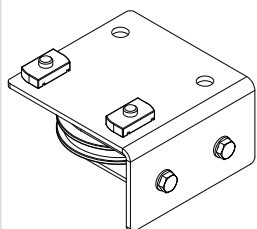
22. LIMIT SWITCH SET

Art. No.	Colour	Weight	Quantity
8050 0770 0030	Green		2 pieces
Info Plug & Play 1			



23. RETURN PULLEY SINGLE TRACK

Art. No.	Colour	Weight
8050 0410 0037	Black	0.95 kg/p



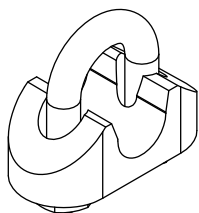
24. RETURN PULLEY DOUBLE TRACK

Art. No.	Colour	Weight
8075 0410 0027	Black	1.38 kg/p



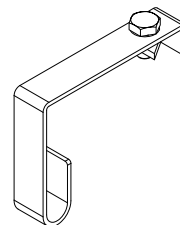
25. DOUBLE-BRAIDED ROPE

Art. No.	Colour	Weight	Info
7530 0308 0007	Black	0.04kg/m	8mm



26. CABLE CLAMP SET

Art. No.	Colour	Weight	Quantity
8050 0248 0035	Inox	0,014 kg/p	3 pieces



27. LINE PICKUP

Art. No.	Colour
8055 0694 0007	Black

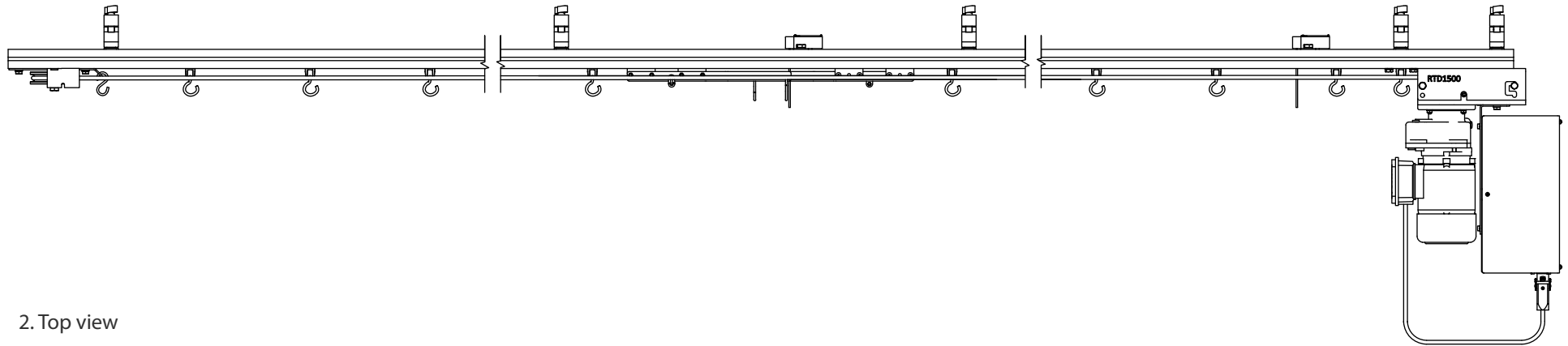
Info

For double track configuration & + 12 metres track lengths.

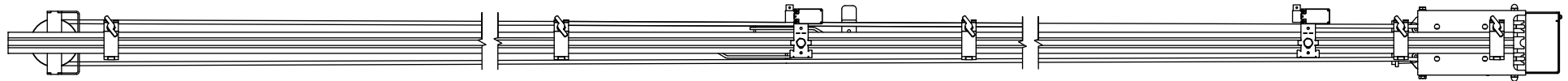
ASSEMBLED SINGLE-TRACK CENTRAL OVERLAP

FRONT, TOP AND BOTTOM PLAN VIEW

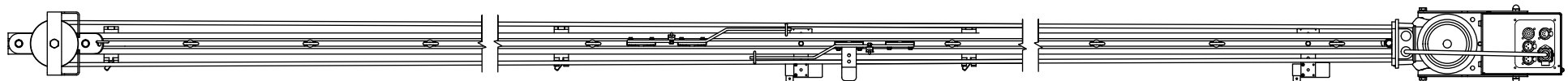
1. Front view



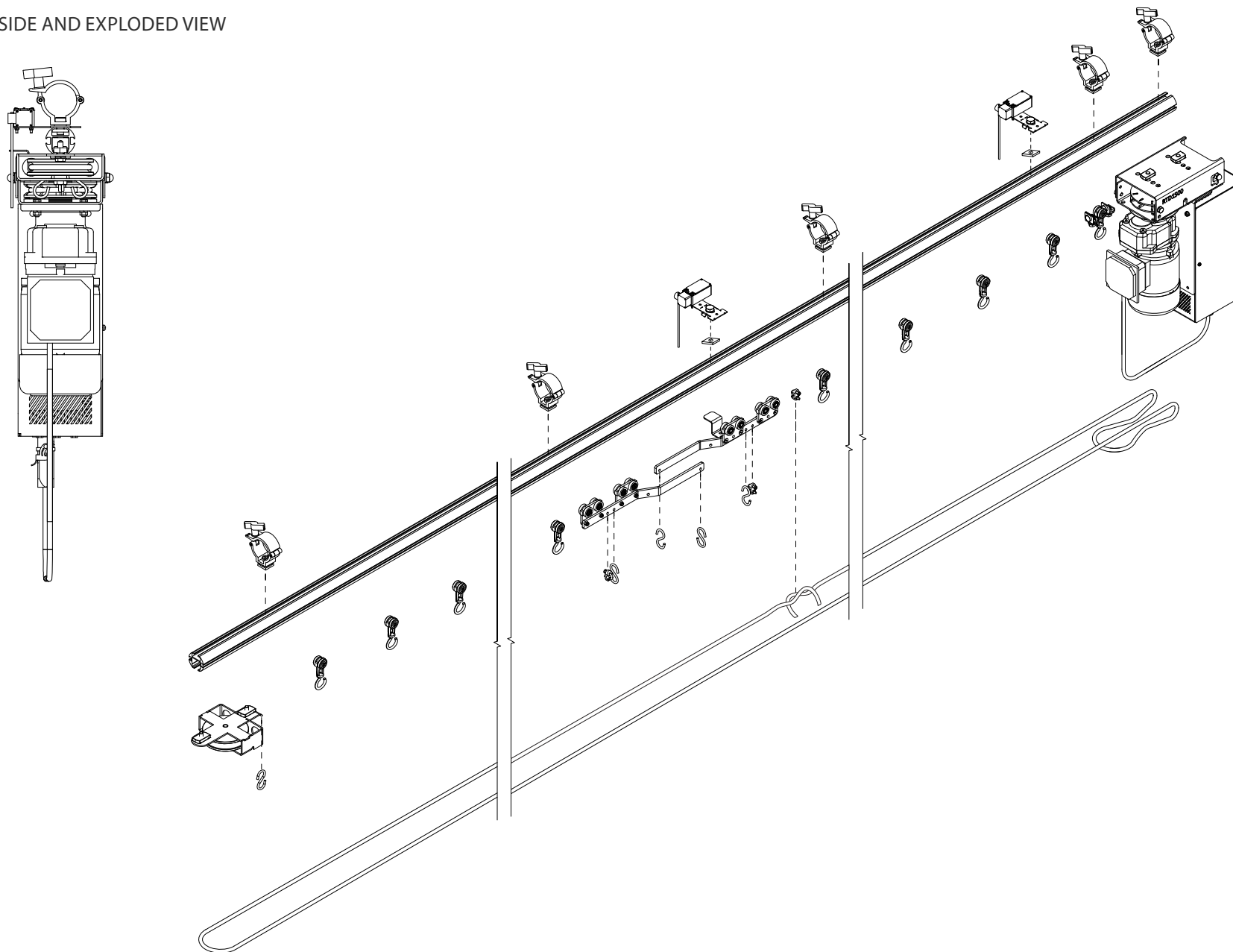
2. Top view



3. Bottom plan view



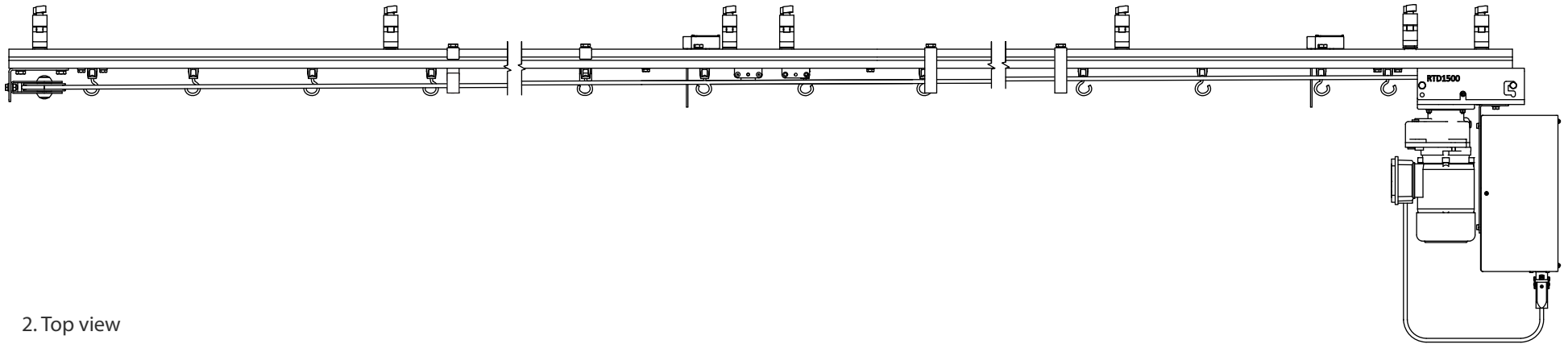
SIDE AND EXPLODED VIEW



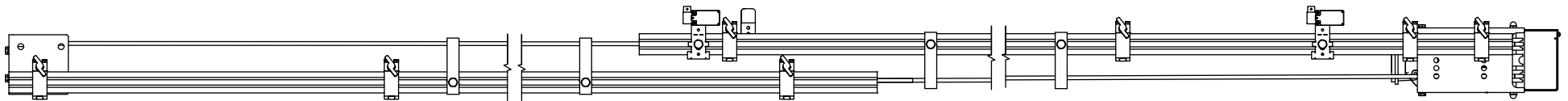
ASSEMBLED DOUBLE-TRACK CENTRAL OVERLAP

FRONT, TOP AND BOTTOM PLAN VIEW

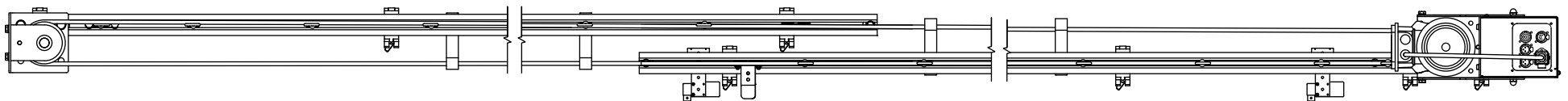
1. Front view



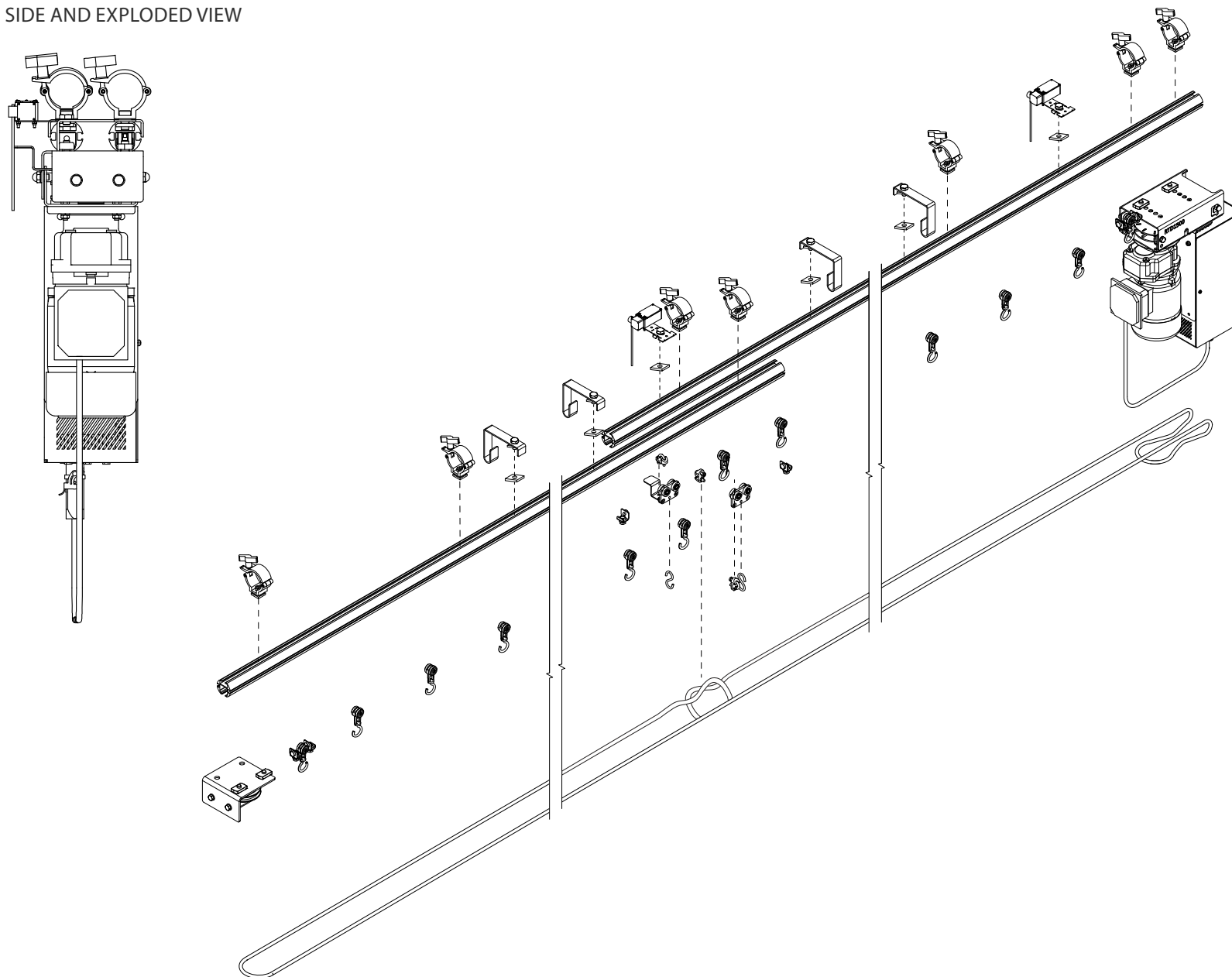
2. Top view



3. Bottom plan view

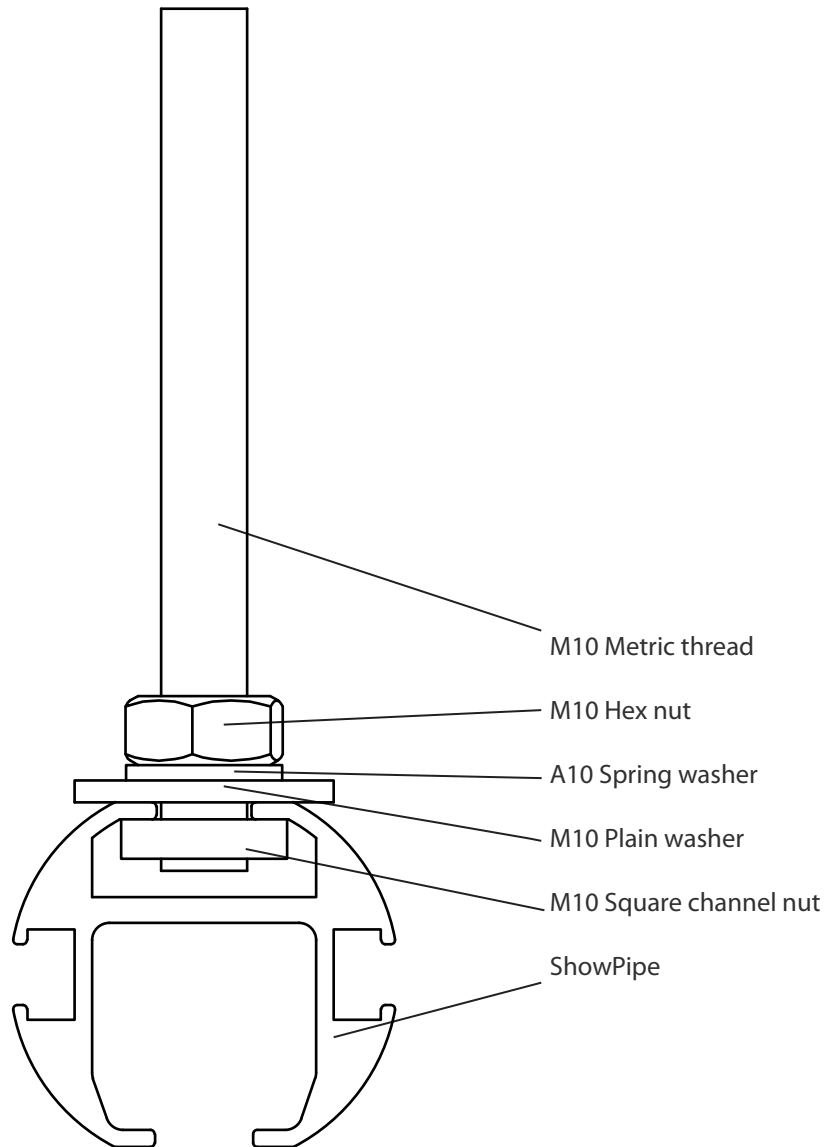


SIDE AND EXPLODED VIEW

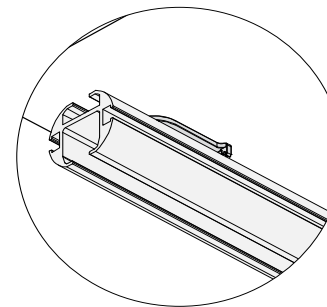
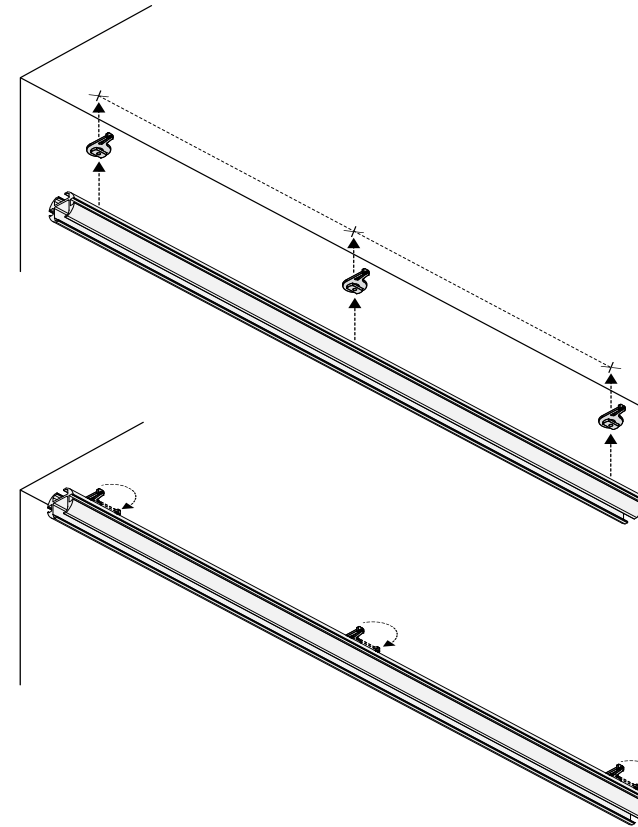


ALTERNATIVE MOUNTING OPTIONS

USING METRIC THREAD



USING CEILING CLIPS



1. Mount all clips into the supporting structure and mount the track onto the ceiling clips.
2. Keep supporting the rail!
3. Give a quarter turn to lock the rail, keep supporting until all the clips have been locked.



Reduce the maximum distance between each mounting point to 1m when using ceiling clips.

INSTALLATION

This chapter provides all required information and steps necessary for installing a ShowPipe rail system motorised by an RTD 1500 motor unit. Note that a certain technical knowledge and experience are required to understand this guide and install this product.



CHECK THE “HOW TO ...” CHAPTER FOR CORRECT INSTALLATION OF THE SYSTEM.

NECESSARY STEPS

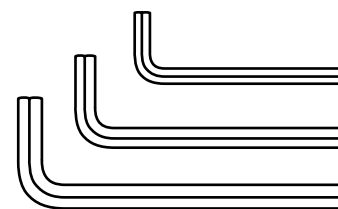
1. Determine attachment points & distance between them.
2. Place coupler clamps on rail(s), secure them by hand.
3. Slide joiner set in outer end of each rail.
4. Mount first rail section onto supporting structure & secure clamps to rail.
5. Mount second rail onto supporting structure & secure joiner sets.
6. Repeat step 5 for all other rail sections.
7. Insert 1 runner between 2 end stops (optional).
8. Prepare the RTD motor unit for the correct track setup.
9. Install the RTD motor unit.
10. Insert runners & master or overlap carriers.
11. Insert 2nd end stop or a runner between 2 end stops depending on track configuration.
12. Install return pulley.
13. Install line pick-ups every 3 or 4 metre for double track or +12 metre track lengths.
14. Install limit switches.
15. Mount & position limit switches accordingly.
16. Insert double-braided rope accordingly.
17. Tension the operating line.
18. Move master or overlap carriers to centre position of rail or stage.
19. Move rope ends to correct position just behind the master or overlap carrier.
20. Connect rope to master or overlap carriers.
21. Connect limit switches, RTD unit & remote control accordingly.
22. Connect DMX & set DMX address (optional).
23. Check system without curtain & check curtain width.
24. Hang curtain & test again.
25. Connect curtain ends to fixed runner and return pulley (optional).



When installing a rail between 2 walls, don't forget to attach head & return pulley before securing the rail in the supporting structure!

NECESSARY TOOLS

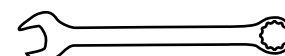
The following tools are needed to install the ShowPipe motorised rail track.



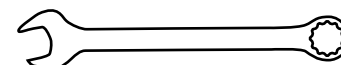
Allen Key 2.5

Allen Key 3

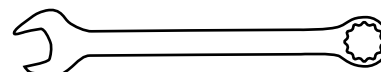
Allen Key 8



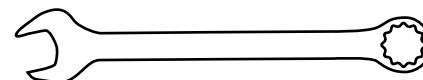
Wrench 7



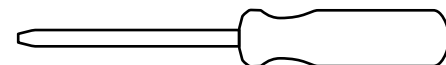
Wrench 8



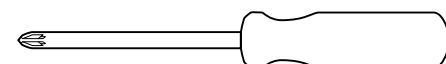
Wrench 13



Wrench 17



Screwdriver flat



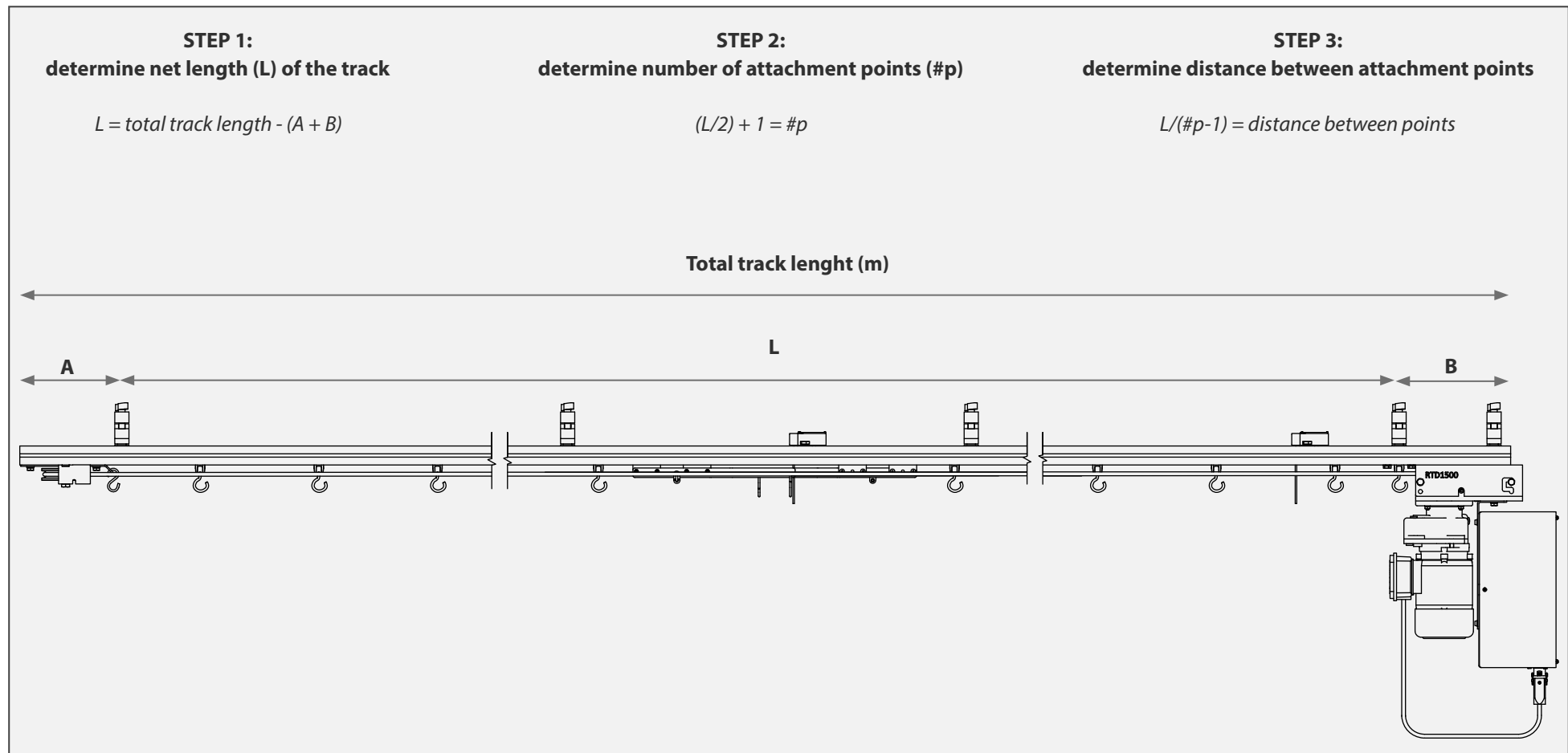
Screwdriver
cross

HOW TO...

[BACK TO LIST](#)

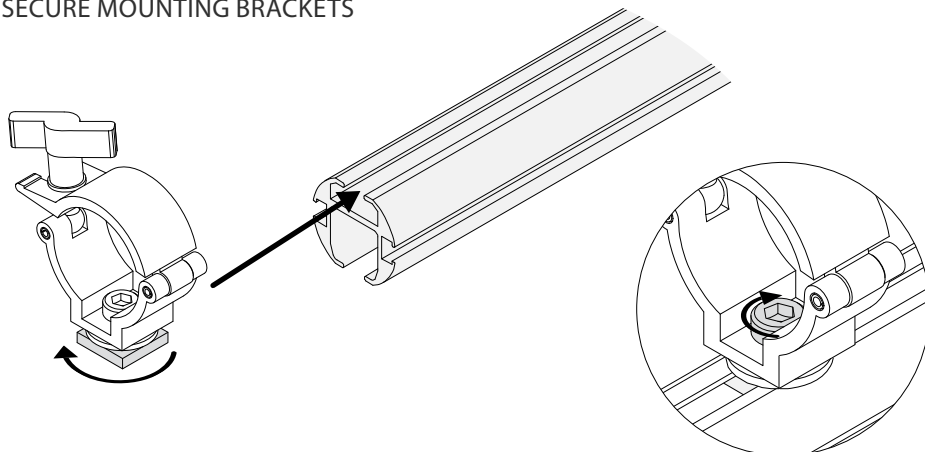
DETERMINE THE NUMBER OF ATTACHMENT POINTS & DISTANCE BETWEEN THEM

Determine the amount of attachment points you need and calculate the distance between them by following the steps outlined below.
Never exceed the maximum distance of 200 cm between each point!



When connecting two pieces of rail, always place an extra suspension point within 25 cm of the joiner set!

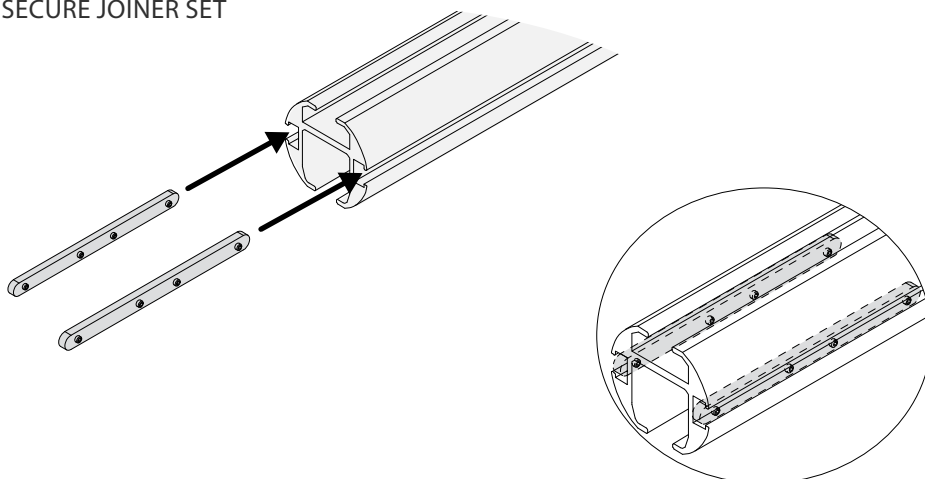
SECURE MOUNTING BRACKETS



1: Loosen the channel nut & slide brackets into the top slit of the rail.

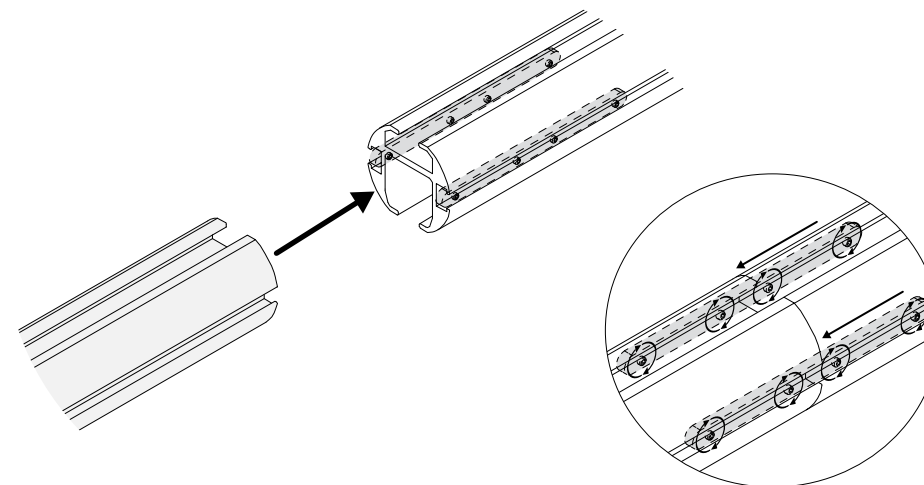
2: Tighten the socket screw.

SECURE JOINER SET



1: Slide the joiner plates all the way into the side slits of the rail.

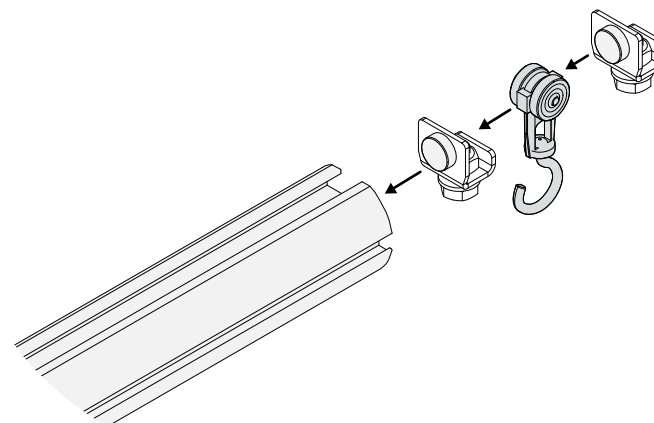
2: Don't secure them at this point.



3: Take the 2nd piece of rail and align with the 1st piece of rail.

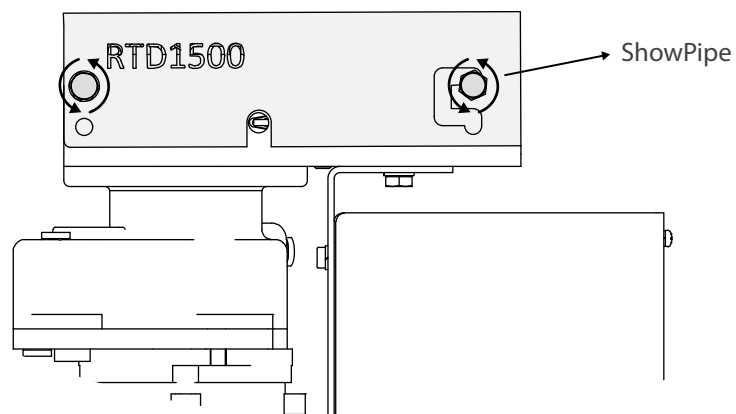
4: Slide the plates halfway over the connection and tighten the socket screws.

INSERT ONE RUNNER BETWEEN TWO END STOPS



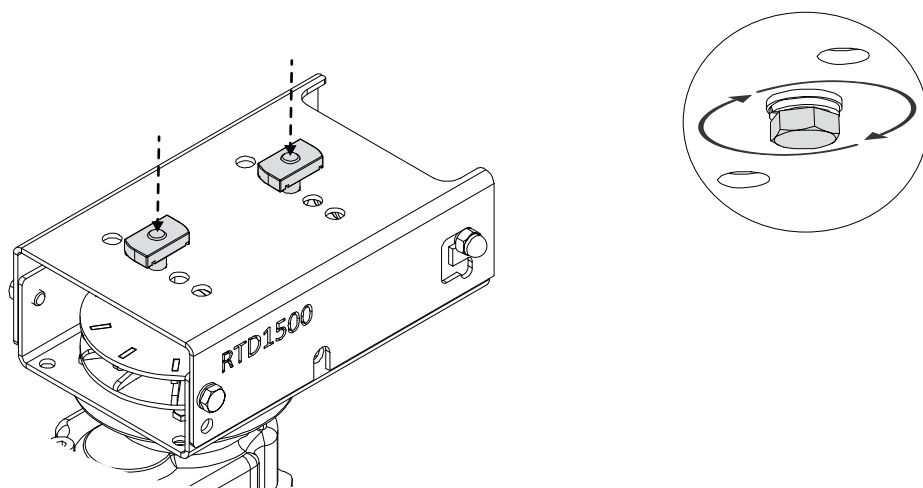
1: Refer to page 9 (single-track configuration) or 11 (double-track configuration) in order to insert accordingly.

PREPARE THE RTD UNIT: **SINGLE-TRACK CONFIGURATION**



1: Loosen both bolts (M8) to adjust the height as shown above.

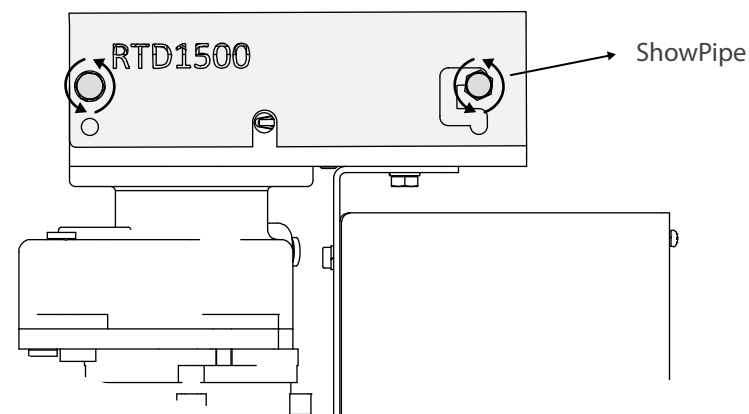
2: Once correctly placed, tighten the bolts (M8), give an extra $\frac{1}{2}$ turn to secure.



3: Place the channel nuts in the correct position for a single-track configuration.

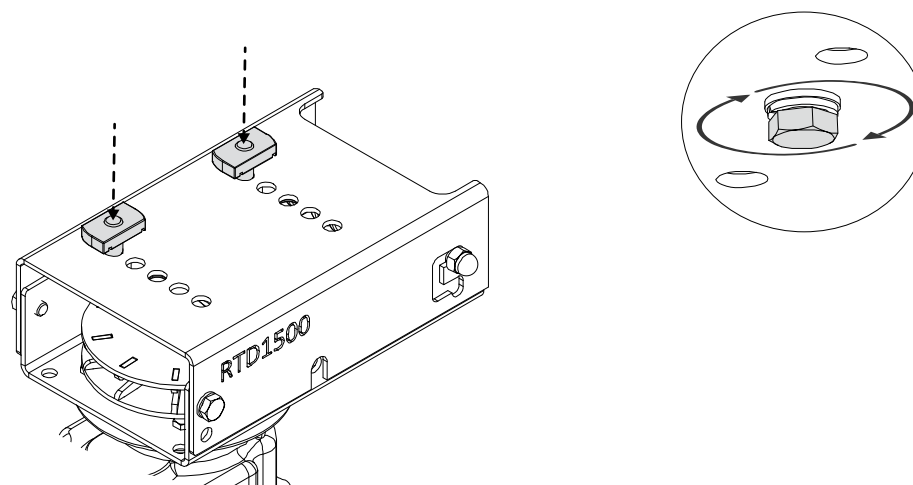
4: Secure the bolts (M8) hand-tight, leave space to slide into rail.

PREPARE THE RTD UNIT: **DOUBLE-TRACK CONFIGURATION**



1: Loosen the bolts (M8) to adjust the height as shown above.

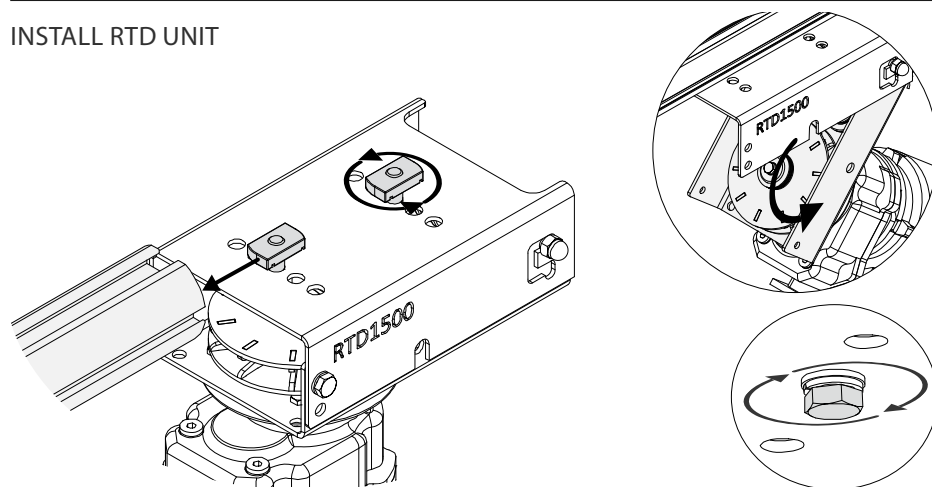
2: Once correctly placed, tighten the bolts (M8), give an extra $\frac{1}{2}$ turn to secure.



3: Place the channel nuts in the correct position for a double-track configuration.

4: Secure the bolts (M8) hand-tight, leave space to slide into rail.

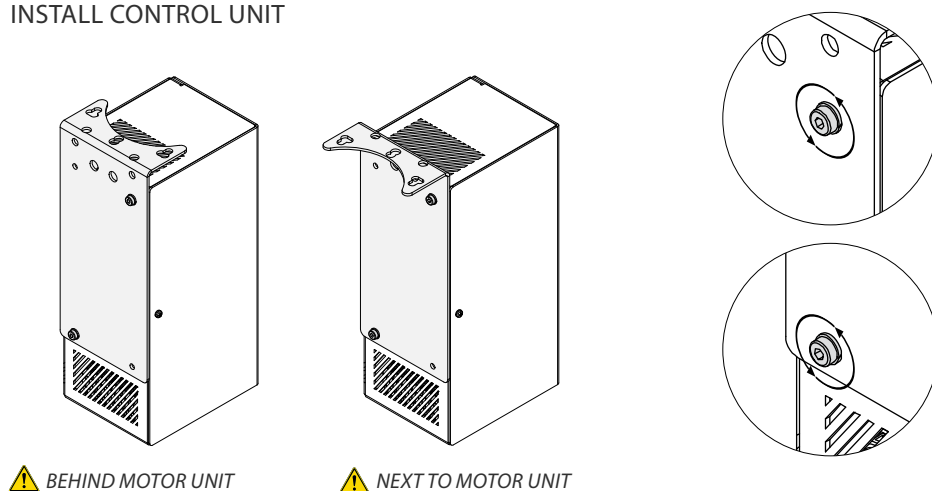
INSTALL RTD UNIT



1: Slide the motor unit into the bottom slit of the rail & open the transmission box.

2: Tighten both bolts (M8), give an extra $\frac{1}{2}$ turn to secure.

INSTALL CONTROL UNIT

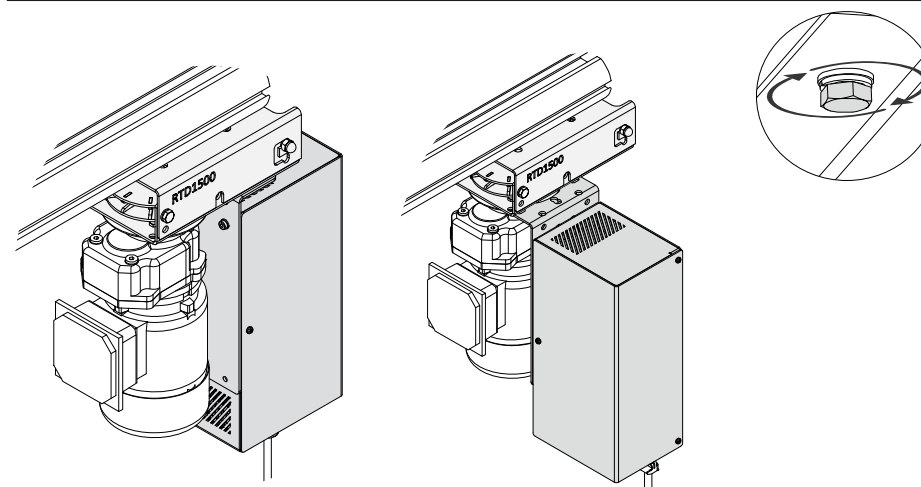


⚠ BEHIND MOTOR UNIT

⚠ NEXT TO MOTOR UNIT

1: Choose where you want the control unit to go in relation to the motor.

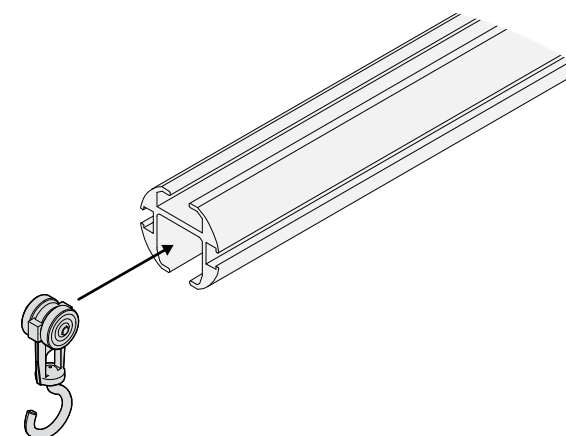
2: Loosen the both nuts to adjust the mounting plate.



1: Mount the control unit onto the motor .

2: Tighten the bolts (M8), give an extra $\frac{1}{2}$ turn to secure.

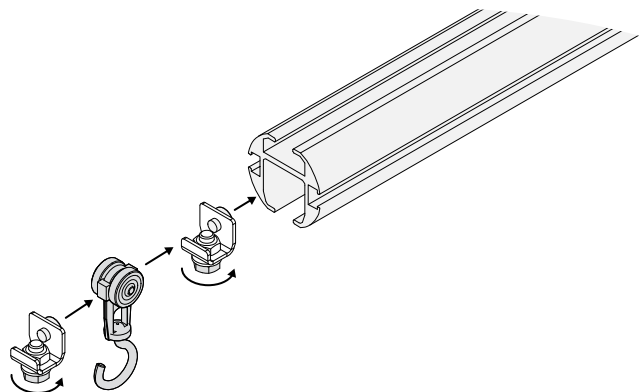
INSERT RUNNERS, MASTER CARRIERS & END STOPS



1: Refer to page 9 (single-track configuration) or 11 (double-track configuration) in order to insert accordingly.

INSERT 2ND END STOP OR A RUNNER BETWEEN 2 END STOPS

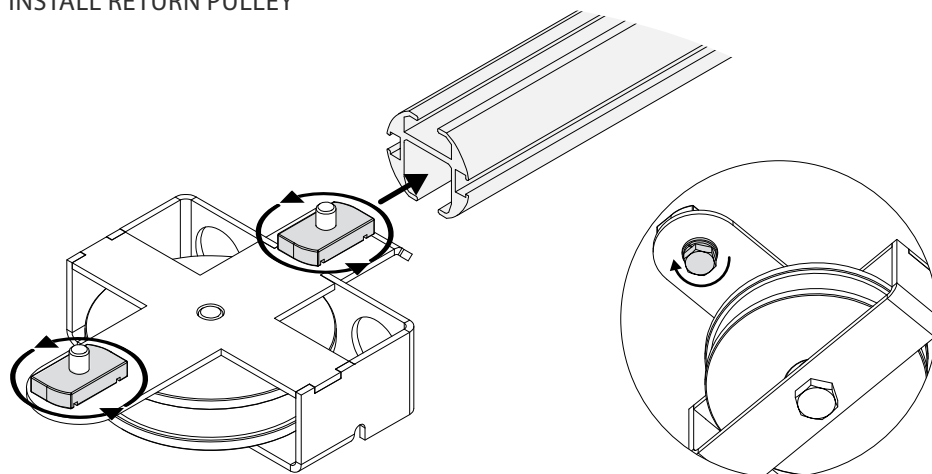
⚠ ONLY FOR DOUBLE-TRACK CONFIGURATION!



1: Make sure the rubber muffer faces the runners and/or master carriers.

2: Fasten the bolt (M8) hand-tight, give an extra ½ turn to secure.

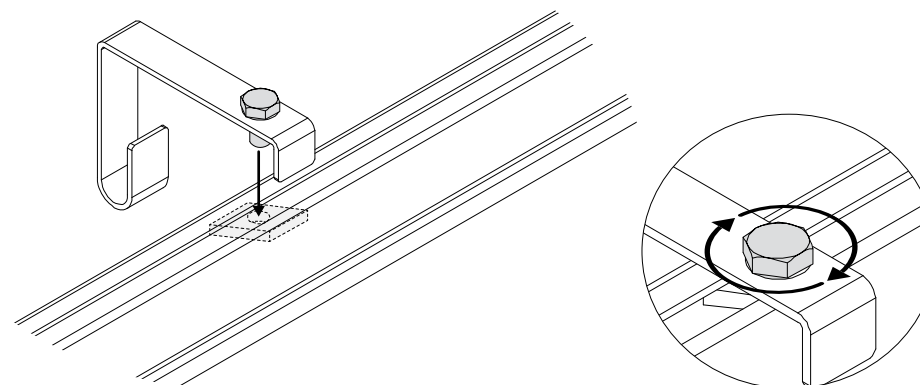
INSTALL RETURN PULLEY



1&2: Loosen both channel nuts (M8) & slide the pulley into the rail.

3: Tighten both bolts (M8), give an extra ½ turn to secure.

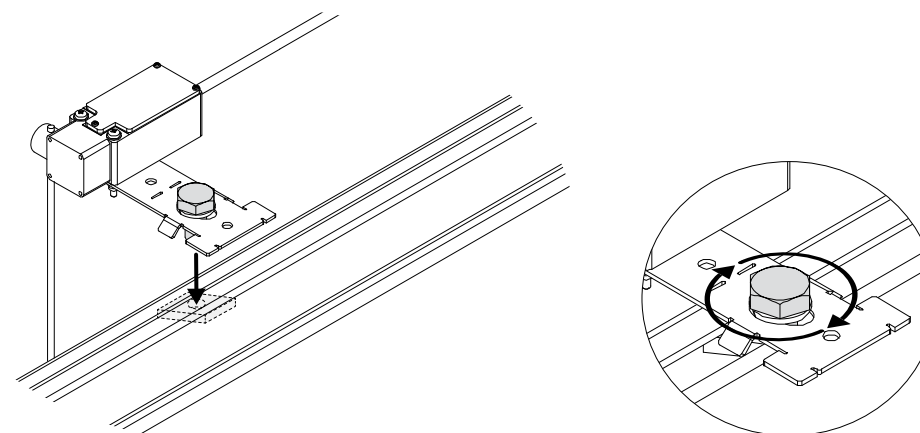
INSTALL LINE PICKUPS EVERY 3 TO 4 METRES



1: Use the diamond-shaped channel nuts to mount the pickups onto the rail.

2: Fasten the bolts (M10) hand-tight, give an extra ½ turn to secure.

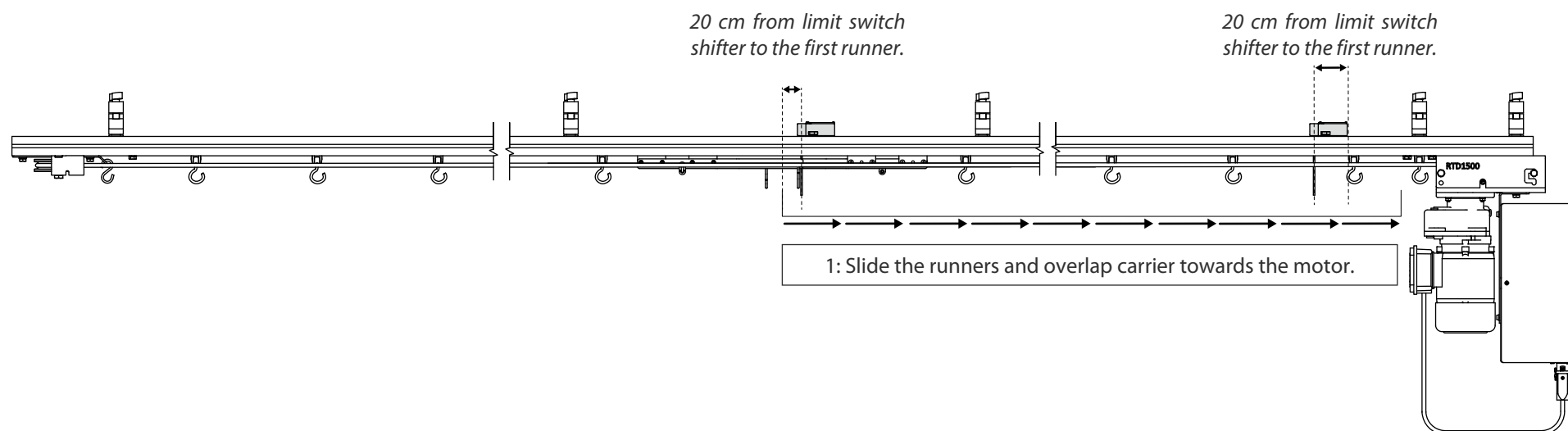
INSTALL LIMIT SWITCHES



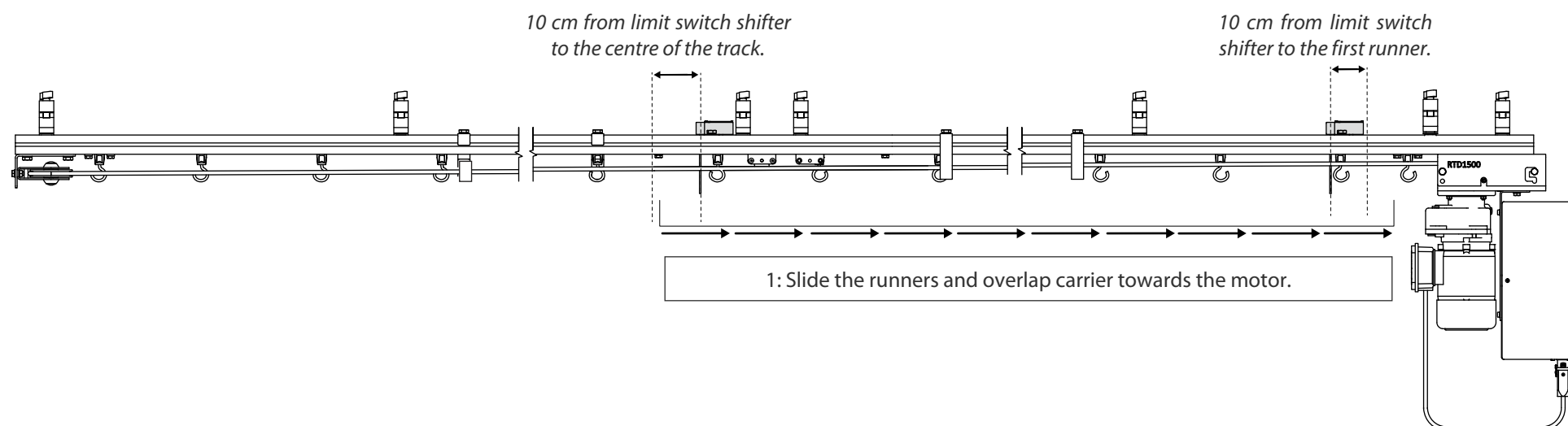
1: Mount the switches onto the rail while the cables faces the motor unit.

2: Fasten the bolts (M10) hand-tight, give an extra ½ turn to secure.

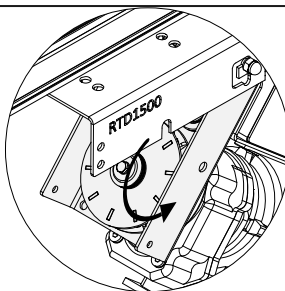
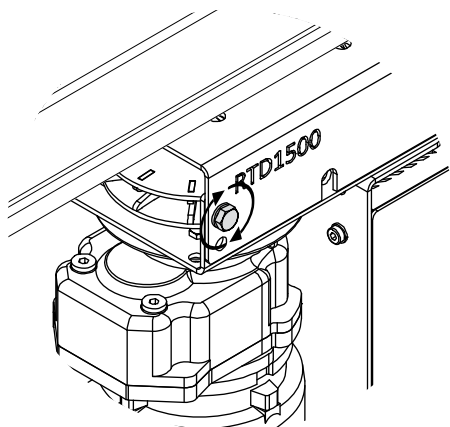
POSITIONING THE LIMIT SWITCHES: **SINGLE-TRACK CONFIGURATION**



POSITIONING THE LIMIT SWITCHES: **DOUBLE-TRACK CONFIGURATION**

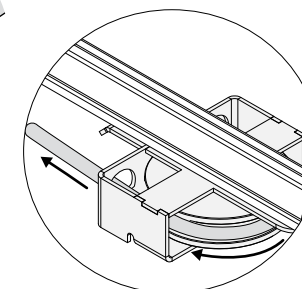
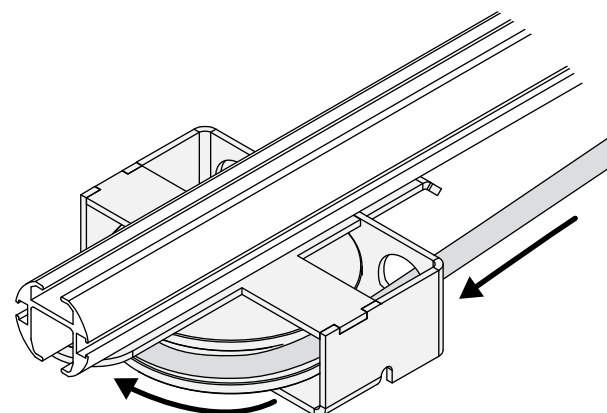


GUIDE THE DOUBLE-BRAIDED ROPE



1: Loosen the bolts (M8) on both sides of the motor casing.

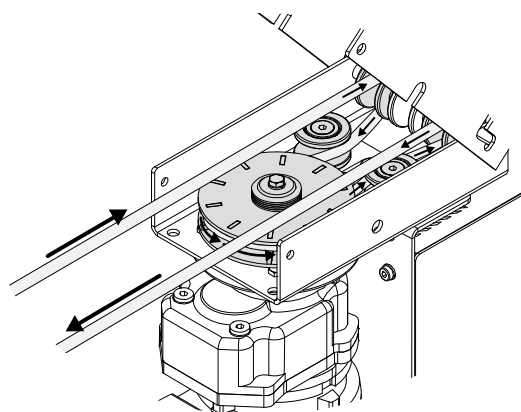
2: Open the motor casing, close after threading the rope.



5: Pull the returning end of the rope through the return pulley.

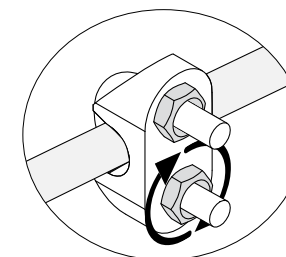
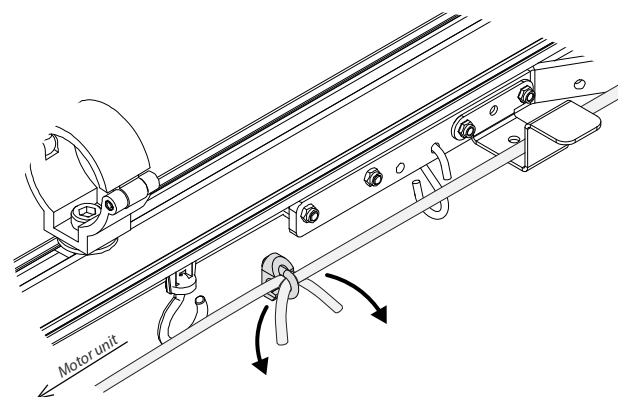
6: Take the rope and walk back towards the motor unit.

SECURE THE DOUBLE-BRAIDED ROPE



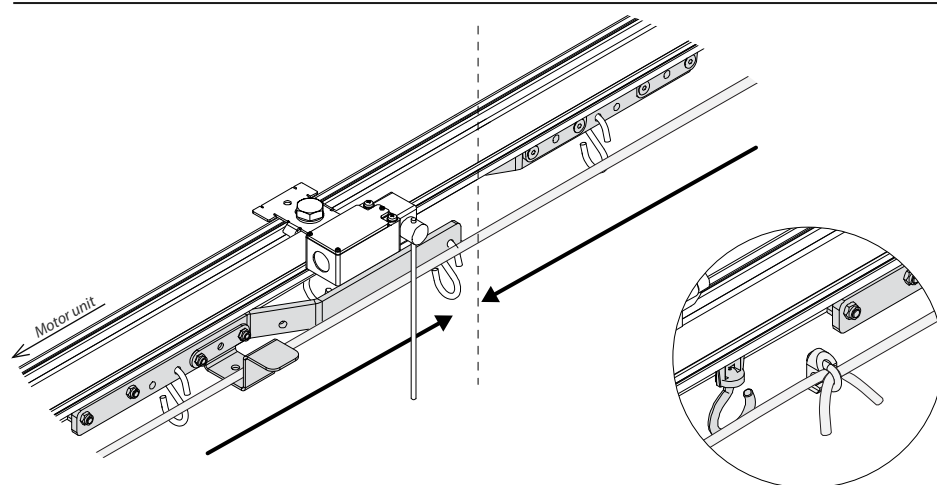
3: Thread the rope through the motor, starting on the front side of the rail.

4: Take the returning end of the rope & walk to the return pulley.



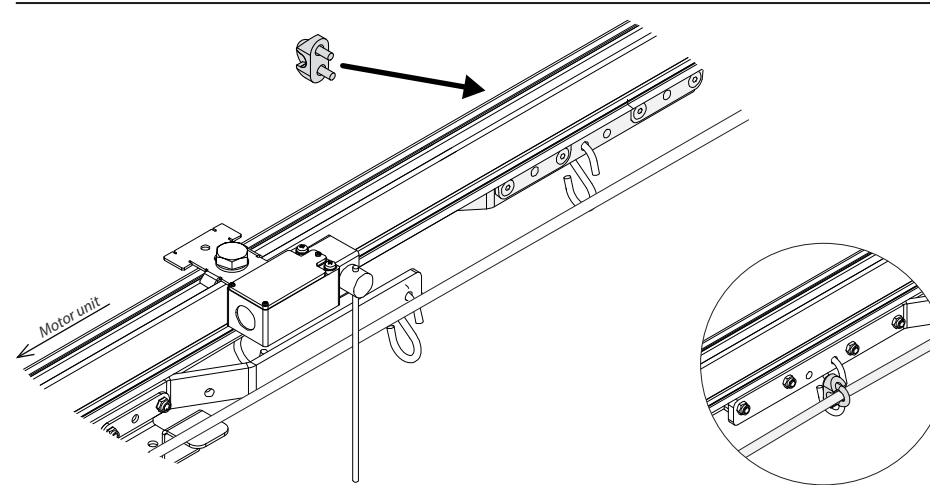
1: Connect the rope ends using the first rope clamp.

2: Adjust the tension of the operating line by tightening the knot.



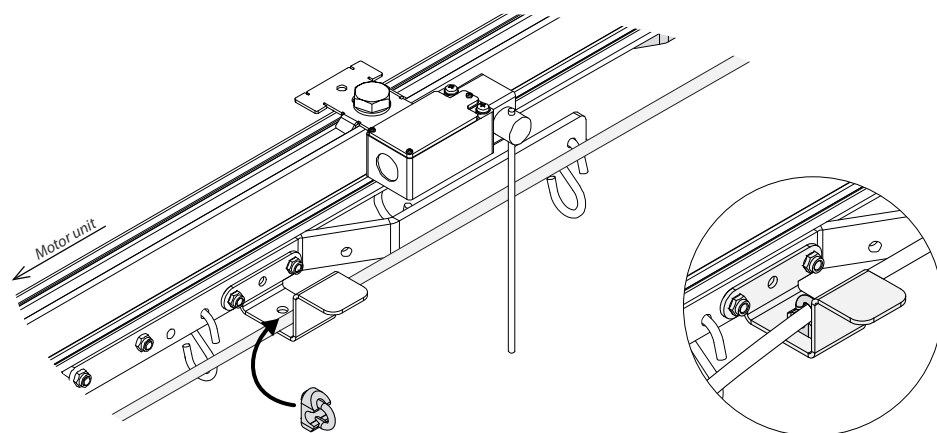
3: Bring the (overlap) carriers to the centre position of the rail or stage.

4: Bring the rope ends back together just behind the (overlap) carrier.



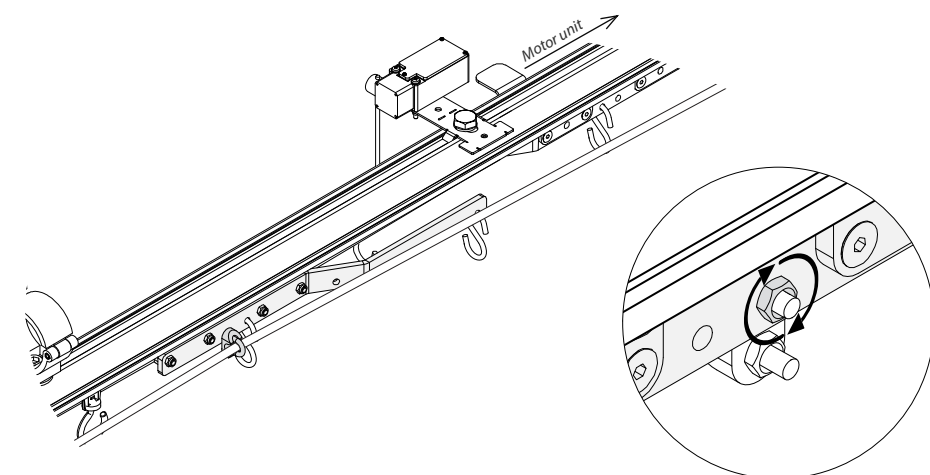
7: Use the 3rd clamp to attach the returning rope to the second (overlap) carrier.

8: Use the lower nut of the clamp to secure the rope to the clamp.



5: Use the 2nd rope clamp to attach the operating line to the first (overlap) carrier.

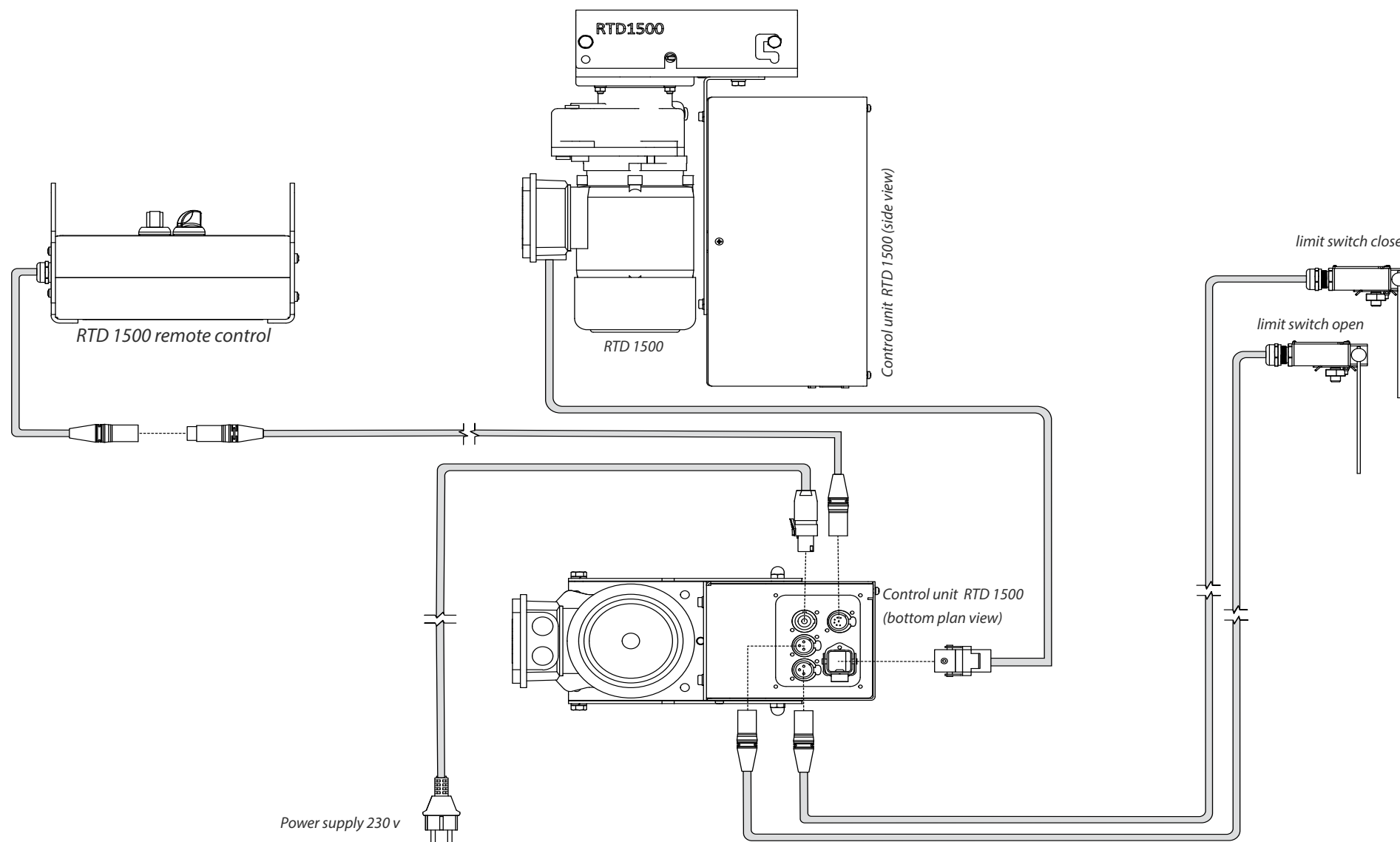
6: Tighten both nuts of the clamp firmly to prevent the rope from slipping away.



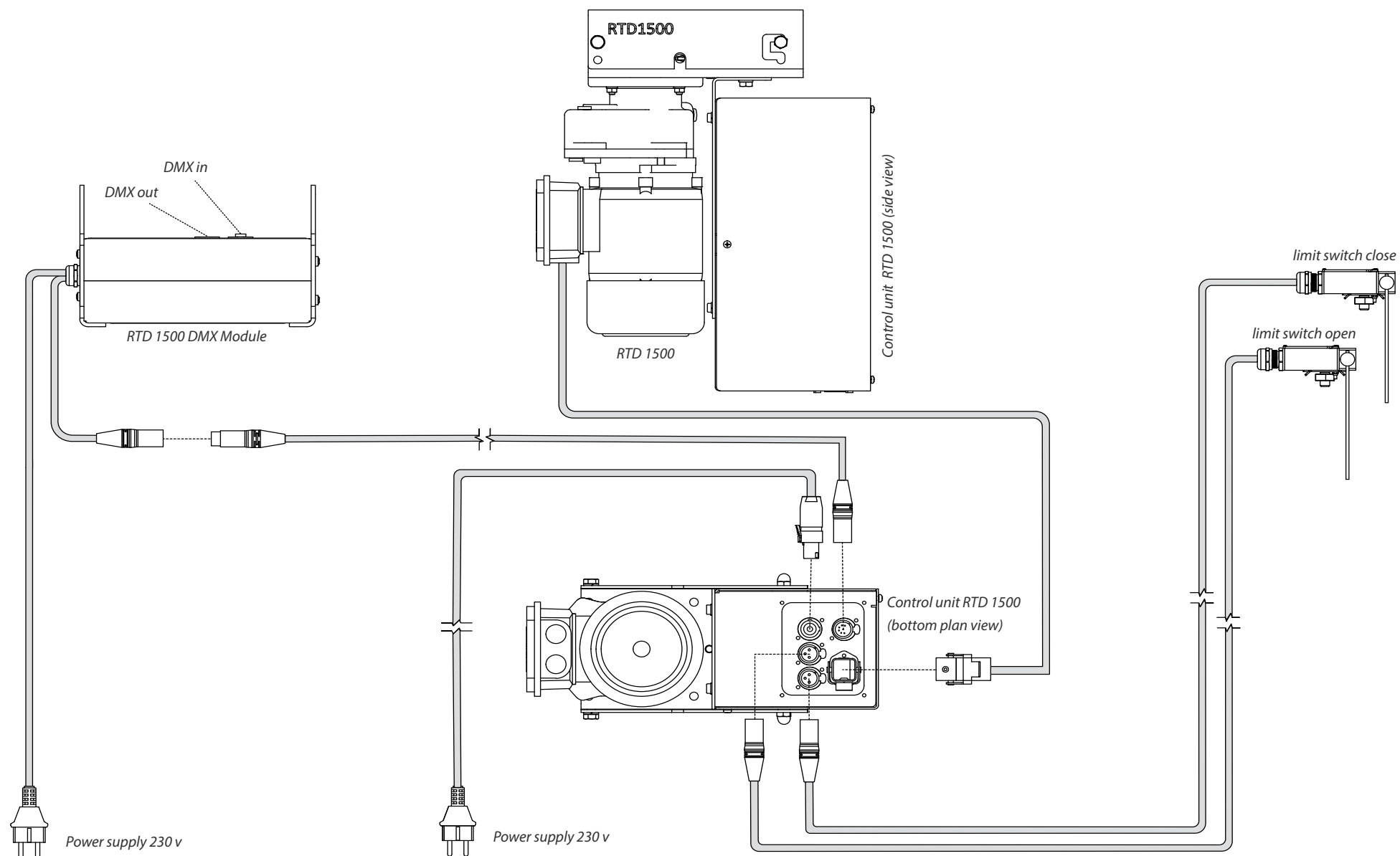
9: Loosen & remove the upper nut in order to attach the clamp to the carrier.

10: Secure the clamp to the carrier by tightening the upper nut.



CONNECT THE LIMIT SWITCHES, RTD UNIT AND REMOTE CONTROL

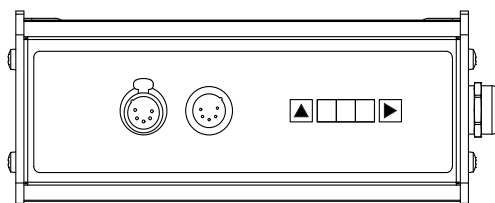




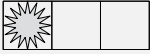



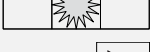



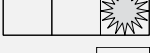


CONNECT THE LIMIT SWITCHES, RTD UNIT AND REMOTE CONTROL FOR DMX SETUP



SET UP THE DMX MODULE

-  Scrolling thru the menu.
-  Changing the display.



SETTING OF THE DMX VALUE		
Push 1x 		The display shows Adr (after 3 seconds the display will turn off). Each DMX address has 3 values.
Push 1x 		The second digit will start blinking (after 5 sec the display will turn off).
	Push on 	to change the value from 0 to 9 (jumps back to 0 after 9).
	confirm with 	
Push 1x 		The second digit will start blinking (after 5 sec the display will turn off).
	Push on 	to change the value from 0 to 9 (jumps back to 0 after 9).
	confirm with 	
Push 1x 		The third digit will start blinking (after 5 sec the display will turn off).
	Push on 	to change the value from 0 to 9 (jumps back to 0 after 9).
	confirm with 	
Confirmation of the setting, wait until REC appears on the display.		
The second channel will automatically follow the start address.		

SCROLLING THRU THE MENU

Push 1x  To scroll thru the menu

Adr >>>>

Setting of DM address

S1

Not applicable, has to be set to OFF

S2

To change, push on  choose between ON and OFF) and confirm with 

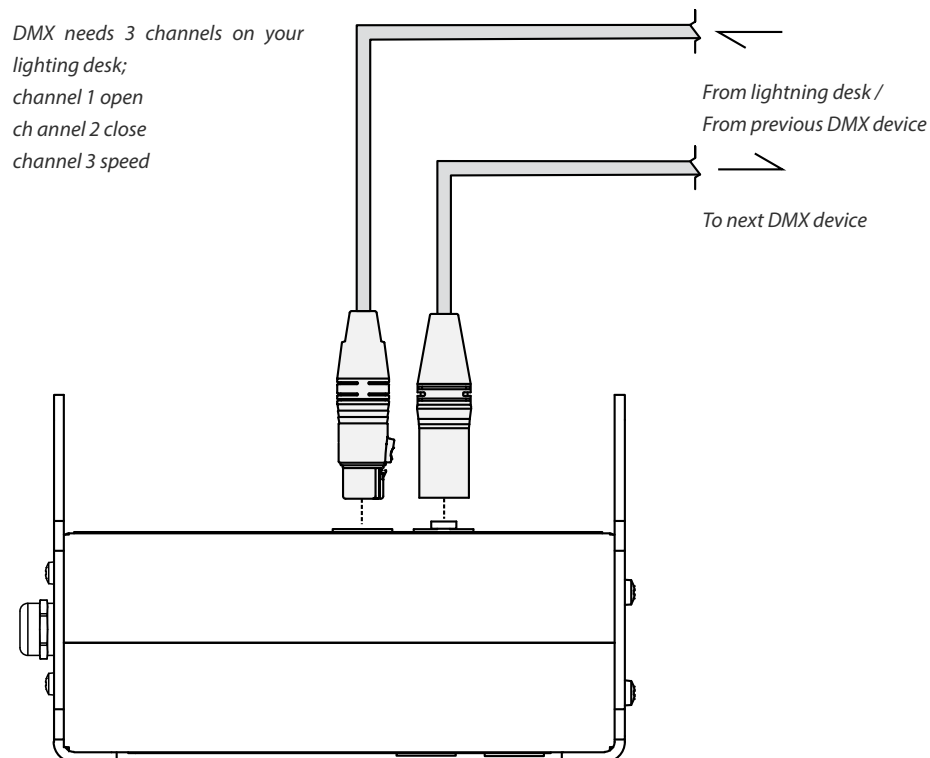
S3

S4

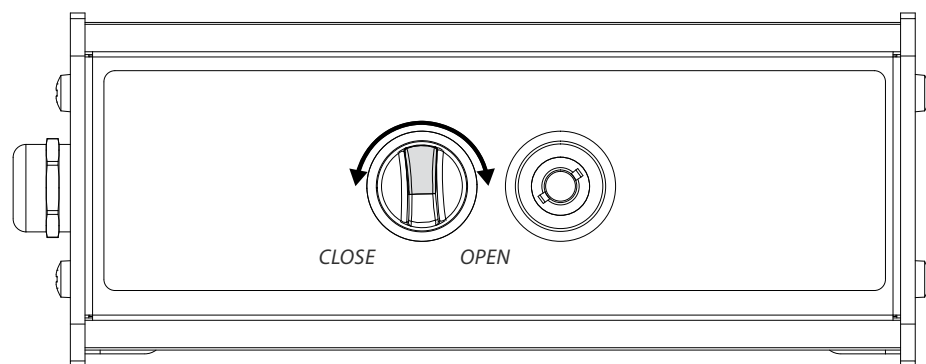
(the display will turn off after 5 sec and the last setting will be saved)

DIS

DMX needs 3 channels on your lighting desk;
channel 1 open
channel 2 close
channel 3 speed



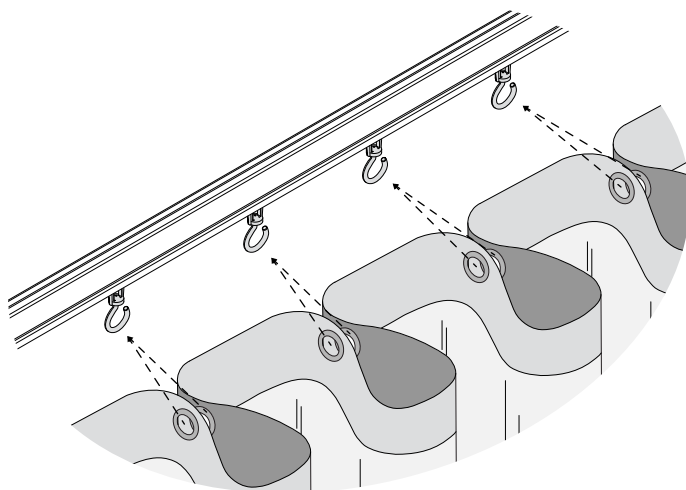
INSTALL THE CURTAIN



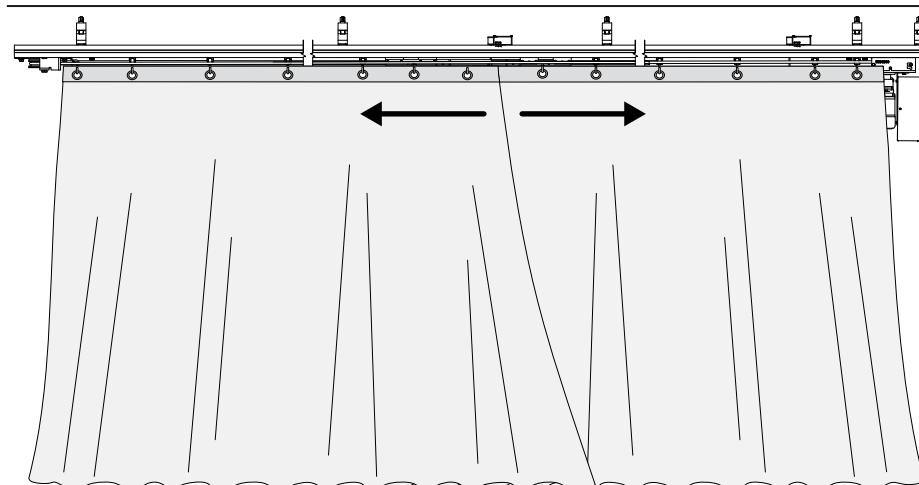
RTD 1500 remote control

The same principle applies to the RTD 1000 DMX BASIC remote controller

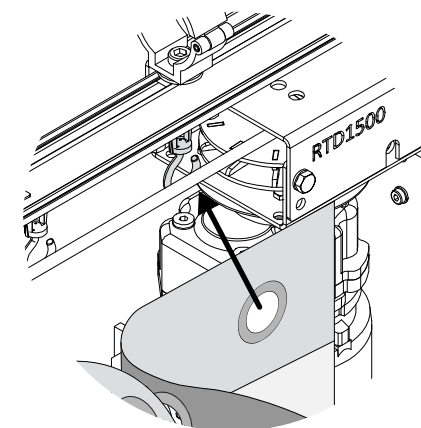
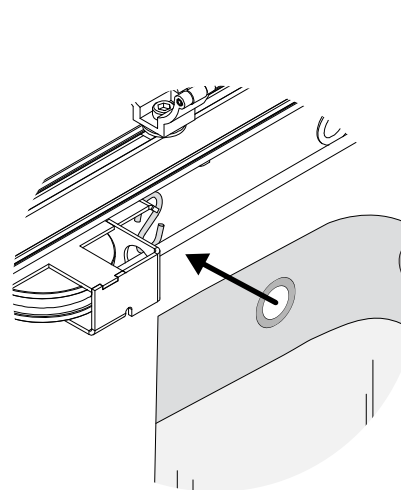
1: Check if the limit switches are plugged into the correct input (trial and error) & if the (overlap) carriers are in line with the centre of the rail or stage. Use the remote to open and close the system, if the (overlap) carriers end up at the same point as they started, your system is properly installed.



2: In order to create a pleated curtain you must take two grommets together and attach them to the same swivel hook. When you ordered a flat curtain, simply attach each grommet to a separate swivel hook.



3: Hang the curtain and do a final check-up of the rail system and curtain width, perform the test using the same method as described in the first step of this chapter.



4: Attach one curtain end to the return pulley using an S-hook and attach the other end to the runner between the end stops. This will keep your curtain in place.

CARE AND MAINTENANCE



Periodic, regularly scheduled maintenance inspections are necessary for any mechanical system. A theatrical curtain track system is no different. It has components that must be inspected, adjusted, maintained and replaced. **In order to keep your system safe and in good working order, a regular inspection and maintenance program must be implemented.**

Follow the schedule outlined below as a minimum maintenance programme. Once the operating personnel has had an opportunity to work with the system during the first year, certain measures may be added or adjusted depending on your facility's requirements.

ITEM	w	m
Operate curtain tracks	x	
Listen for unusual carrier noise	x	
Check if curtain tracks are operating smoothly		x
Inspect conditions of operating line		x
Inspect operating line tension		x
Listen for unusual pulley noise		x
Inspect master carriers and cord clamps		x
Inspect curtain to carrier attachment		x
Inspect track joints for alignment		x
Inspect track channel for debris		x
Inspect attachment of track to building structure		x

* W = every week

* M = every 6 months

Within 24 hours of using a recently installed system, confirm if the rope is tensioned correctly for curtain movement.

The best way to maintain your theatrical curtain track system, including the RTD motor unit, is by using it regularly. This will keep the grease properly distributed and allow the inspector to regularly check for unusual noise or drag in the system. Above-average use or operating the curtain track at locations subject to high humidity, dust, extreme temperature changes, etc. may require shorter intervals than indicated in the scheduled programme outlined above.

TROUBLE SHOOTING

Please perform the following steps:

IF THE CURTAIN STOPS MOVING SMOOTHLY	
1.	Check if objects are obstructing the track.
2.	Check for damage to the track, repair if this is the case.
3.	Check for debris on the track or runners, if found, remove carefully.
4.	Check for damaged runners, replace if applicable.
5.	Check that all couplers are aligned without gaps, if not, align them.
6.	The joints between tracks should not be too loose nor too tight to avoid a bent track.
7.	If the curtain slides out of the track, check if the end stops are loose or missing. If necessary, tighten or replace.
8.	If your track has a switching point, check that all parts are correctly aligned. If not, adjust alignment.
9.	If the curtain blocks after triggering the limit switch, disconnect the XLR plugs from the motor and reconnect to the other outlet.

CONTACT & SUPPORT

For more technical assistance, please contact your local ShowTex branch, the address and contact information can be found on our website:

www.showtex.com

Have a great show!