

LUREXVOILE 100

TECHNICAL DATA SHEET

July 2017

Medium transparent voile with a high metallic shine. Can be crushed for extra depth and effects.

» **ARTICLE CODE**

6110 0300 #

» **WIDTH**

300 cm

» **LENGTH**

± 50 m

» **WEIGHT**

50 g/m²

» **COMPOSITION**

100% LUR

» **FLAME RESISTANCE**

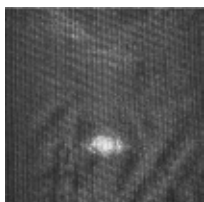
NFP 92-503

BS 5867 PART 2 TYPE B

CLASS M1

PASS

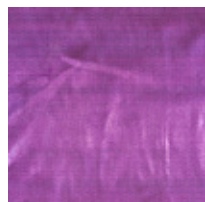
» **AVAILABLE COLOURS**



0007



0200



0232



0300



0500



0510