

## SOLINFIX

### TECHNICAL DATA SHEET

June 2019

SolinFix is a heavy-duty stage floor with a non-slip latex backing for extra grip. As a result of its tight weave, this durable cotton canvas can easily be painted and is resistant to intensive use on stage.

---

» <b>ARTICLE CODE</b>	» <b>WIDTH</b>	» <b>LENGTH</b>	» <b>WEIGHT</b>
5712 0315 #	315 cm	± 35 m	610 g/m <sup>2</sup>

---

» **COMPOSITION**  
75% CO + 25% PA

---

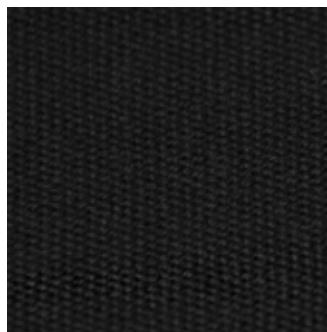
» **FLAME RESISTANCE**  
DIN 4102 CLASS B1

---

» **AVAILABLE COLOURS**



0001



0007

---

NOTE : Please mind the fabric can shrink up to 5% after cutting.  
Lay flat on the ground, during at least 24h before cutting the fabric.