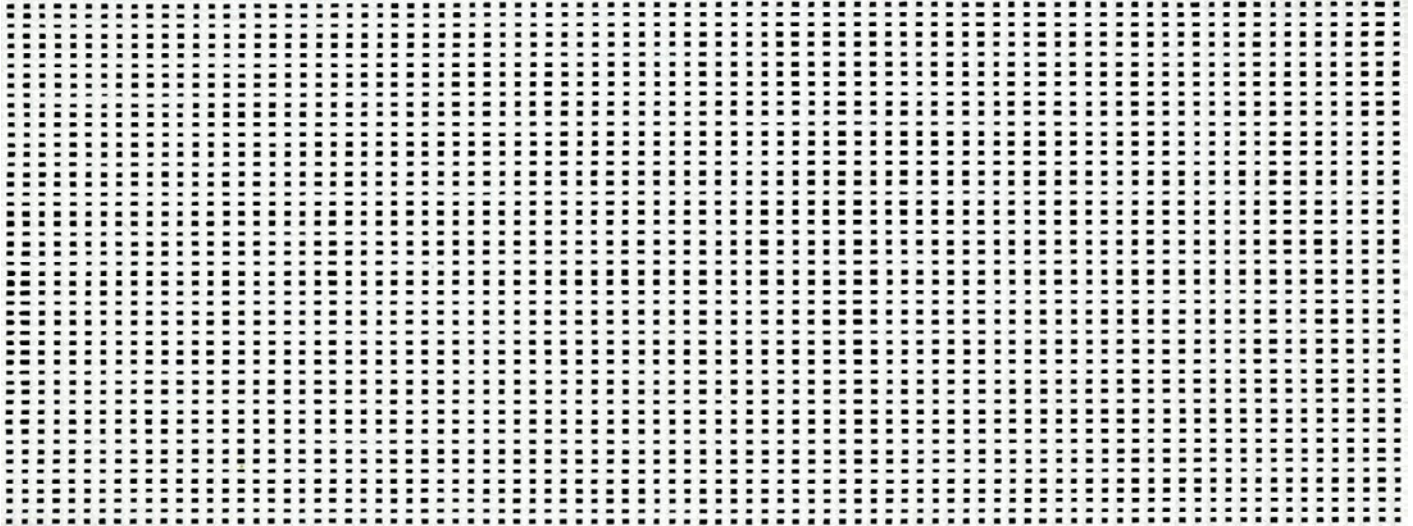


FP XL MESH



Mesh projection surface up to 5 meters wide for constant gain and even light spread. Mesh size: H 0.5 mm x W 0.5 mm. Keeps its shape when tensioned.

SPECIFICATIONS

Item	Width	Length	Weight	Composition
4771	500 cm	± 50 m	340 g/m ²	100% PVC

FR standard		
DIN 4102 / B1	EN 13501-1 / B-s2, d0	NF P 92-507 / M1

Air permeability
DIN EN ISO 9237 ± 1650 l/m ² /sec

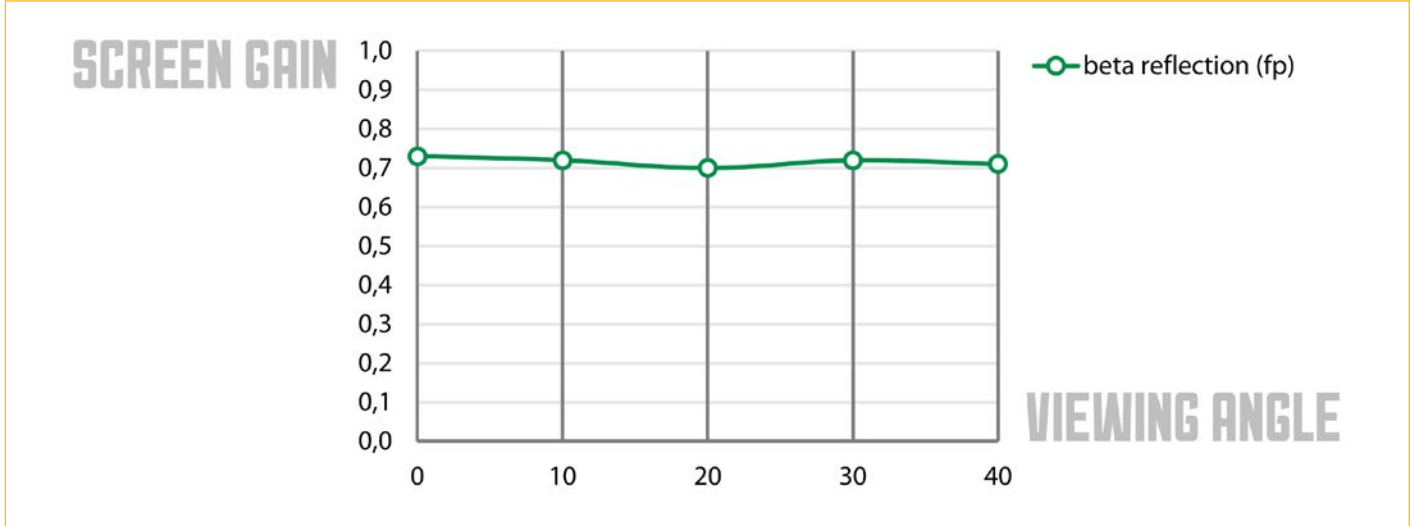
Percentage of opening
± 17%

Tear strength
DIN 53363 ± 340/400 N ± 76/90 lbs

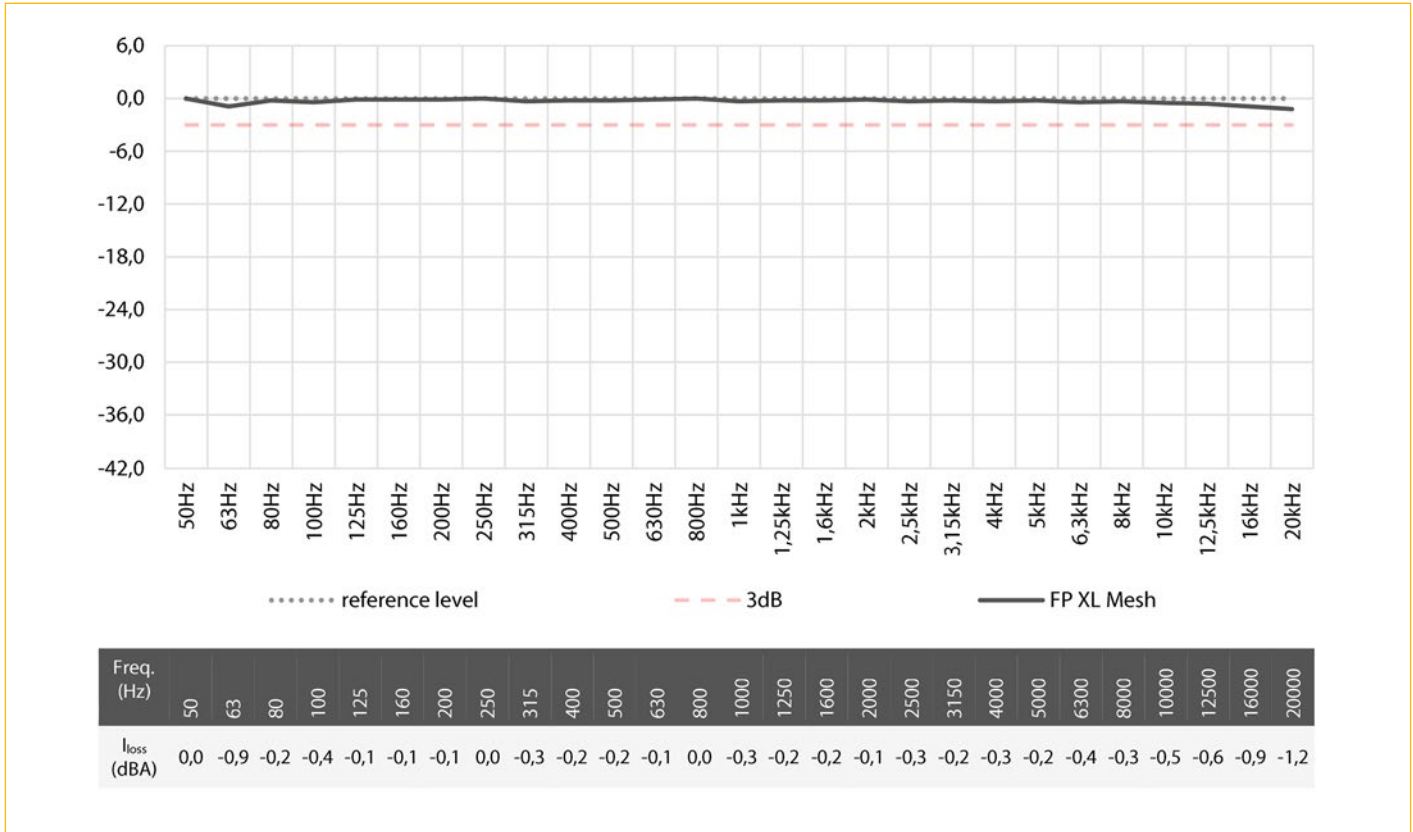
Tensile strength
DIN EN ISO 1421-1 1600/1800 N/5 cm 182/206 lbs/inch

FP XL MESH

OPTICAL CHARACTERISTICS

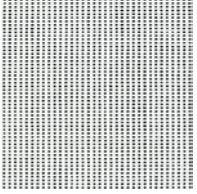


INSERTION LOSS



FP XL MESH

AVAILABLE COLOURS



0549