

FP XL MESH

TECHNICAL DATA SHEET

December 2019

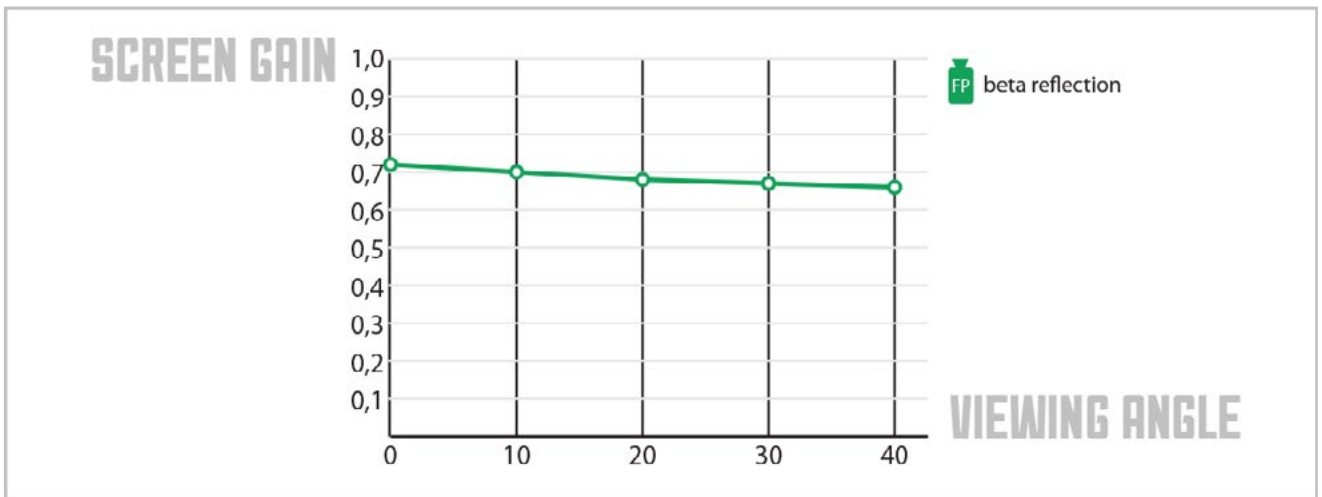
For constant gain and even light spread. Seamless up to 5m wide. For outdoor use.
 Mesh size: H 0.5 mm x W 0.5 mm. Keeps its shape when stretching.

| | | | |
|-----------------------|----------------|-----------------|----------------------|
| » ARTICLE CODE | » WIDTH | » LENGTH | » WEIGHT |
| 4770 0500 0549 | 500 cm | ± 50 m | 355 g/m ² |

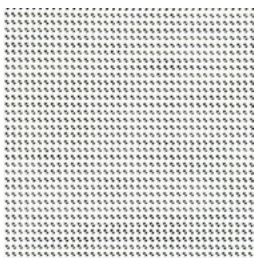
» **COMPOSITION**
 100% PVC

| | |
|---------------------------|----------|
| » FLAME RESISTANCE | |
| DIN 4102 | CLASS B1 |
| NF P 92-503 | CLASS M1 |

» **OPTICAL CHARACTERISTICS**



» **AVAILABLE COLOURS**

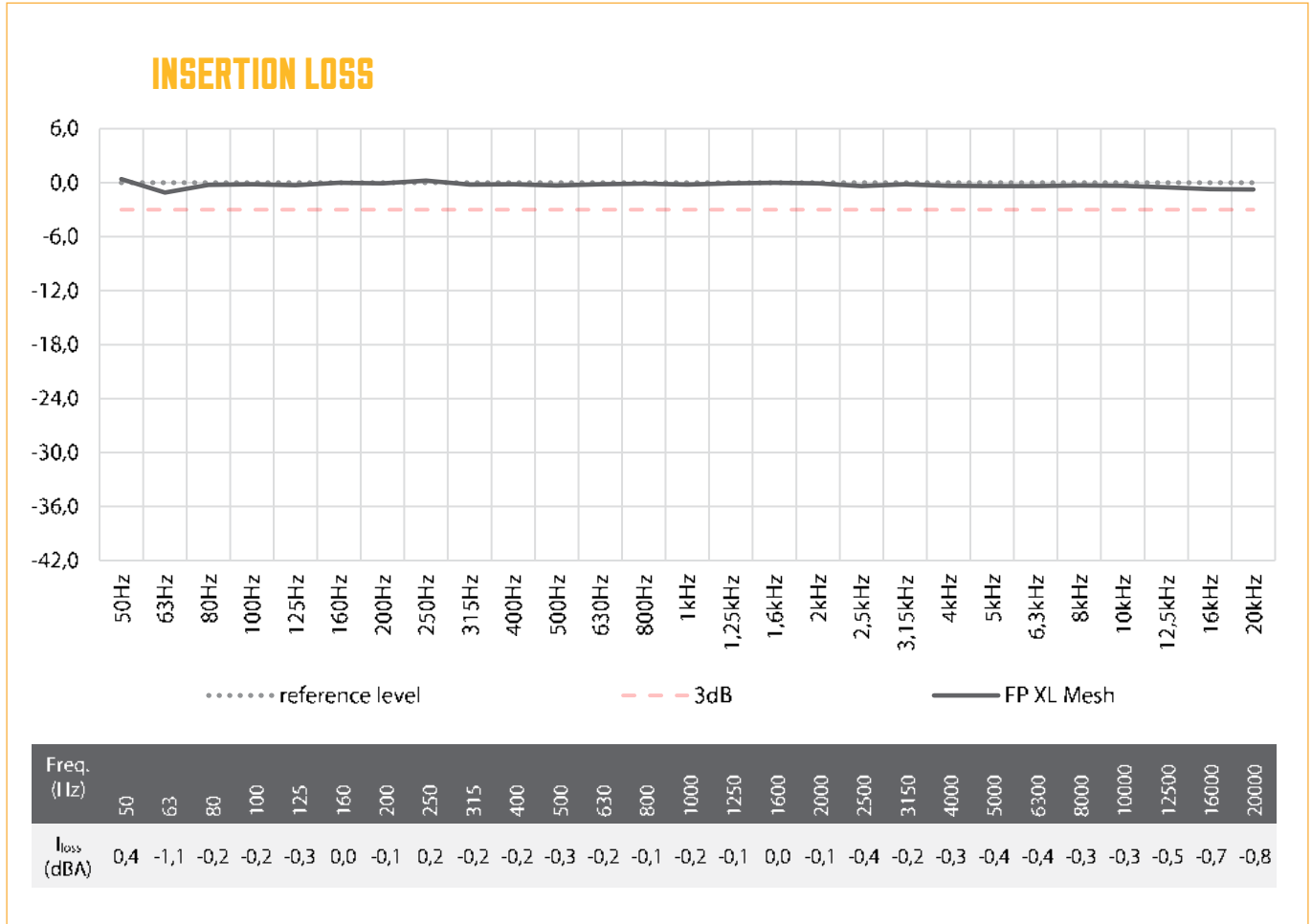


0549

FP XL MESH

TECHNICAL DATA SHEET

December 2019



FP XL MESH

TECHNICAL DATA SHEET

December 2019

