

## CHOUCROUTE LIGHT

### TECHNICAL DATA SHEET

June 2019

Light weight non-woven event fabric. Handmade. Great to add texture and depth.

» **ARTICLE CODE**

3648 0300 #

» **WIDTH**

300 cm

» **LENGTH**

± 50 m

» **WEIGHT**

200 g/m<sup>2</sup>

» **COMPOSITION**

100% CV

» **REMARKS**

Colour variations are inherent to this type of fabric.

» **FLAME RESISTANCE**

DIN 4102

BS 5867 PART 2 TYPE B (1980)

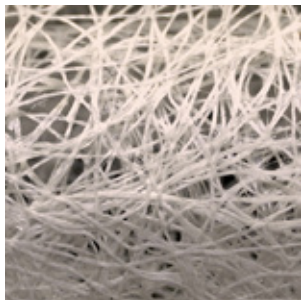
NFPA

CLASS B1

PASS

PASS

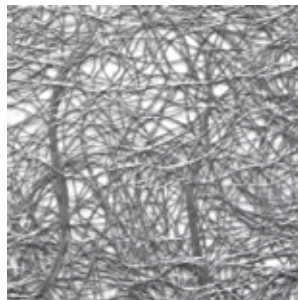
» **AVAILABLE COLOURS**



0001



0007



0025