

OUTDOOR COLOUR MESH

TECHNICAL DATA SHEET

August 2022

Weatherproof dense mesh synthetic in vibrant colours.

» **ARTICLE CODE**

3610 0200 #

» **WIDTH**

200 cm

» **LENGTH**

± 100 m

» **WEIGHT**

200 g/m²

» **COMPOSITION**

100% PE

» **FLAME RESISTANCE**

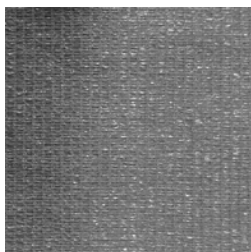
DIN 4102

BS 5867 PART 2 TYPE B (1980)

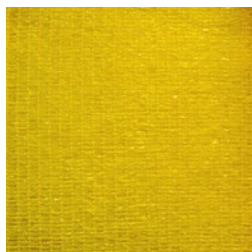
CLASS B1

PASS

» **AVAILABLE COLOURS**



0025



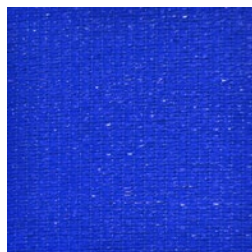
0100



0200



2004



5003



5007



5015