

# STRETCHTULLE



A highly elastic mesh that stretches seamlessly up to 7.5 or even 12 metres wide. Mesh size: H 2 mm x W 4 mm.

## SPECIFICATIONS

Item	Width	Stretch width	Length	Weight	Composition
3521	500 cm	750 cm	± 45 m	200 g/m <sup>2</sup>	98% PES + 2% EA
	700 cm	1200 cm		300 g/m <sup>2</sup>	

### FR standard

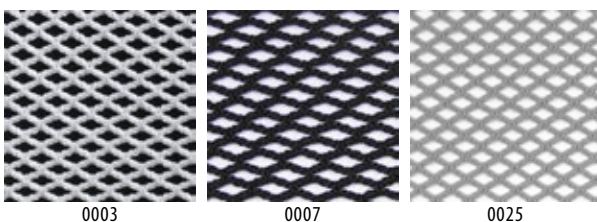
AS 1530.2	EN 13773 / class 1	NF P 92-507 / M1
AS 1530.3	GB 8624 / B1	NFPA 701 / pass
BS 5867 PART 2B / pass	GB 8624/ B2	

500 cm wide is not GB 8624 / B1 certified.

700 cm wide is only NF P 92-507 / M1 • EN 1377 / class 1 • NFPA 701 / pass • GB 8624 / B1 certified.

<b>Air permeability</b> EN ISO 9237 (1995) Average: 3980 l/(m <sup>2</sup> .s)	<b>Colour fastness to light</b> ISO 105-B02-1999+Am 2002 note 6	<b>Tear strength</b> ISO 13937-3: 2000 Warp: 22N - Weft: 15N
<b>Tensile strength</b> ISO 13934-1: 1999 Warp: 590N - Weft: 110N		

## AVAILABLE COLOURS



0003

0007

0025