

CYCLO 200

TECHNICAL DATA SHEET

June 2021

Medium weight standard cyclorama. Flame retardant cotton duck cloth.

» ARTICLE CODE	» WIDTH	» LENGTH	» WEIGHT
3220 0310 #	310 cm	± 60 m	200 g/m ²
3220 0410 #	410 cm	± 60 m	200 g/m ²
3220 0510 #	510 cm	± 60 m	200 g/m ²
3220 0610 #	610 cm	± 60 m	200 g/m ²
3220 0800 #	800 cm	± 60 m	200 g/m ²
3220 1000 #	1000 cm	± 60 m	200 g/m ²
3220 1200 #	1200 cm	± 50 m	200 g/m ²

» COMPOSITION

100% CO

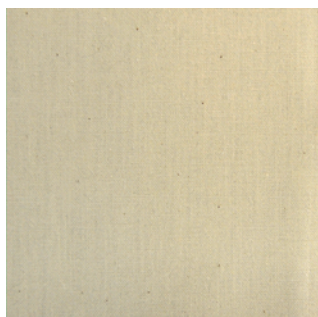
» CARE INSTRUCTIONS



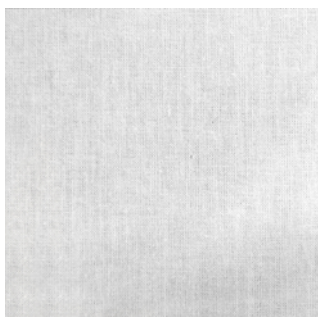
» FLAME RESISTANCE

NF P 92-503 (1980)	CLASS M1
DIN 4102	CLASS B1
BS 5867 part 2B (1980)	PASS
AS 1530.3	PASS
AS 1530.2	PASS
NFPA 701 (2019)	PASS
EN 13773 (2003)	CLASS 1 (only for width 310 cm)

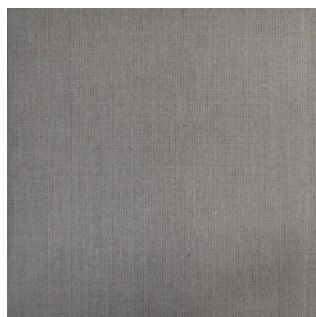
» AVAILABLE COLOURS



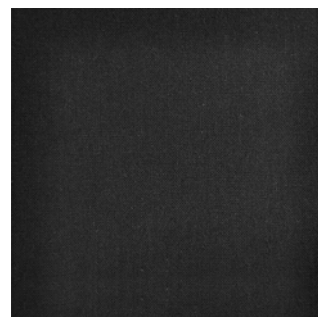
0001



0003



0005



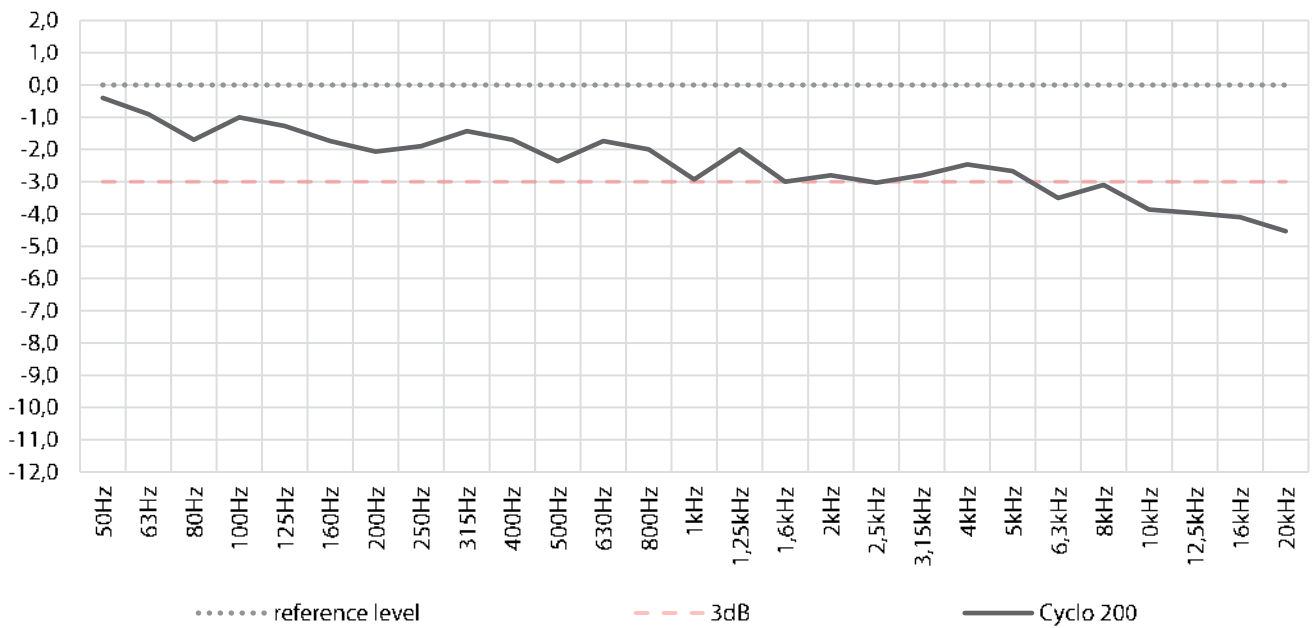
0007

CYCLo 200

TECHNICAL DATA SHEET

June 2021

INSERTION LOSS



Freq. (Hz)	50	63	80	100	125	160	200	250	315	400	500	630	800	1000	1250	1600	2000	2500	3150	4000	5000	6300	8000	10000	12500	16000	20000
l_{loss} (dBA)	0,4	0,9	1,7	1,0	1,3	1,7	2,1	1,9	1,4	1,7	2,4	1,7	2,0	2,9	2,0	3,0	2,8	3,0	2,8	2,5	2,7	3,5	3,1	3,9	4,0	4,1	4,5