


ACOUSTIC SHEER CS

TECHNICAL DATA SHEET

February 2020

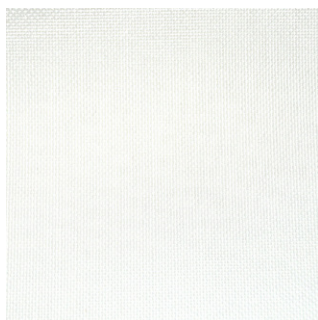
Acoustic Sheer CS is a translucent and yet acoustic fabric that absorbs sound while still letting light shine through. This inherently flame-retardant sheer is the result of a new cutting-edge weaving technology, ideal for covering large sound-reflective windows.

» ARTICLE CODE 2552 0303 #	» WIDTH 303 cm	» LENGTH ± 30 m	» WEIGHT 110 g/m ²
» COMPOSITION 79% TCS + 21% PES FR	» CARE SYMBOLS 		

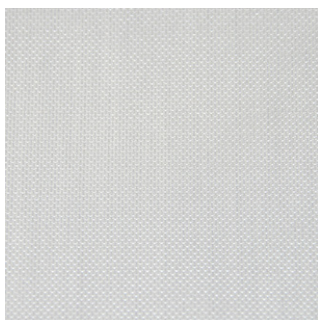
» FLAME RESISTANCE NFP 92-503 (1995) DIN 4102-1 EN 13772 / EN 13773	CLASS M1 CLASS B1 CLASS 1
---	---------------------------------

» LIGHT FASTNESS L=6 / M=6 / D=6-7	» RUBBING FASTNESS EN 14465 dry=4-5 / wet=4-5	» WASHING SHRINKAGE 30°C EN 26 330 8 A Warp= -0,7 % Weft= -0,5 %	» FASTNESS TO WATER SPOTTING DIN EN ISO 105 E 07 Change of colour: 5 Spotting: 5
--	--	---	--

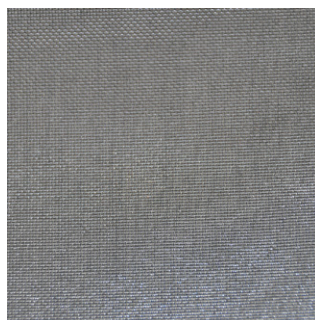
» AVAILABLE COLOURS



0003



0005



0030

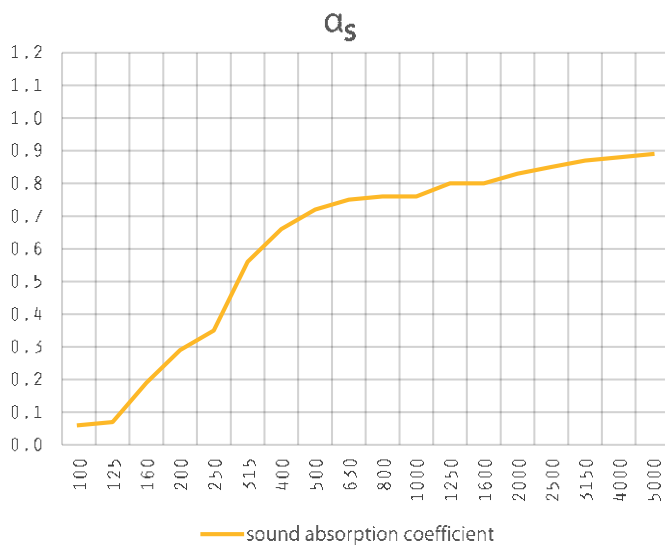
ACOUSTIC SHEER CS

TECHNICAL DATA SHEET

February 2020

SOUND ABSORPTION

full box pleated curtain • 15 cm from the wall



f(Hz)	α_s
100	0,06
125	0,07
160	0,19
200	0,29
250	0,35
315	0,56
400	0,66
500	0,72
630	0,75
800	0,76
1000	0,76
1250	0,80
1600	0,80
2000	0,83
2500	0,85
3150	0,87
4000	0,88
5000	0,89

ISO 11654
 $\alpha_w = 0,70 (H)$