




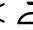
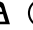
ACOUSTIC SHEER CS LIGHT

TECHNICAL DATA SHEET

April 2021

Acoustic Sheer CS Light is weaved with a cutting-edge technology which makes this translucent fabric acoustically absorbing. Use this flame-retardant sheer to cover windows or as a semi see-through divider in an open office.

» ARTICLE CODE	» WIDTH	» LENGTH	» WEIGHT
2551 0304 #	304 cm	± 30 m	100 g/m ²

» COMPOSITION	» CARE SYMBOLS
82% TCS + 18% PES FR	    

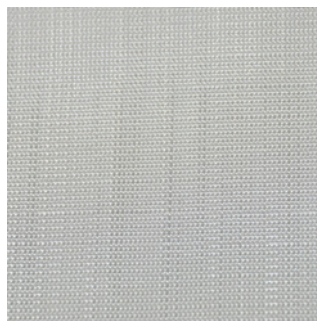
» FLAME RESISTANCE	
NFP 92-503-507	CLASS M1
DIN 4102-1	CLASS B1
EN 13773 (2003)	CLASS 1
NFPA 701 (2019)	PASS

» LIGHT FASTNESS	» RUBBING FASTNESS	» WASHING SHRINKAGE	» FASTNESS TO WATER SPOTTING
L=6 / M=6 / D=6-7	EN 14465 dry=4-5 / wet=4-5	30°C EN 26 330 8 A Warp= -0,7 % Weft= -0,5 %	DIN EN ISO 105 E 07 Change of colour: 5 Spotting: 5

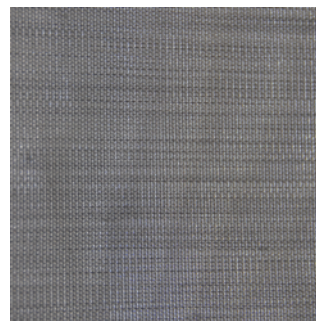
» **AVAILABLE COLOURS**



0003



0005



0030

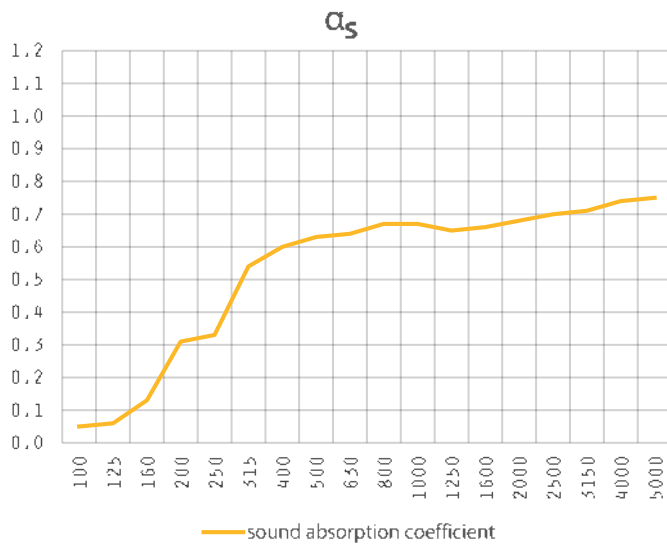
ACOUSTIC SHEER CS LIGHT

TECHNICAL DATA SHEET

April 2021

SOUND ABSORPTION

full box pleated curtain • 15 cm from the wall



f(Hz)	α_s
100	0,05
125	0,06
160	0,13
200	0,31
250	0,33
315	0,54
400	0,60
500	0,63
630	0,64
800	0,67
1000	0,67
1250	0,67
1600	0,67
2000	0,67
2500	0,67
3150	0,67
4000	0,74
5000	0,75

ISO 11654
 $\alpha_w = 0,65$