

LASERVOILE

TECHNICAL DATA SHEET

April 2021

Extra light transparent sheers, ideal for laser projection.

» ARTICLE CODE	» WIDTH	» LENGTH	» WEIGHT
2529 0300 #	300 cm	± 60 m	17 g/m ²

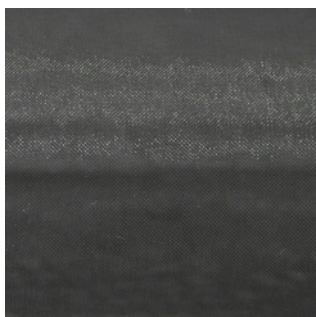
» COMPOSITION
50% TCS + 50% PES FR

» FLAME RESISTANCE	
NF P 92-503	CLASS M1
AS 1530.3	PASS
AS 1530.2	PASS

» **AVAILABLE COLOURS**



0003



0007