

## INFLATABLE WOOL

### TECHNICAL DATA SHEET

August 2017

With its specially developed coating, our Wool Serge Panne is now airtight and ready to be inflated! It is the first textile-based acoustic solution to absorb low-mid to high frequencies!

---

» <b>ARTICLE CODE</b>	» <b>WIDTH</b>	» <b>LENGTH</b>	» <b>WEIGHT</b>
1378 0150 #	150 cm	± 43 m	643 g/m <sup>2</sup>

---

» <b>COMPOSITION</b>
75% WO + 10% MNF + 15% PU coating

---

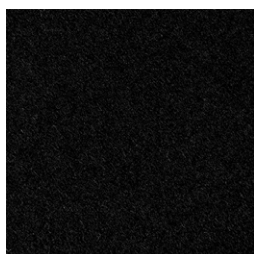
» <b>FLAME RESISTANCE</b>
BS 5867 PART 2B                                  PASS

---

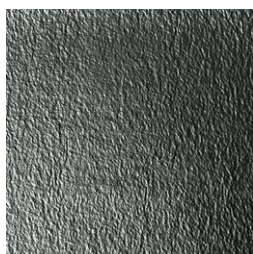
» **AVAILABLE COLOURS**



0001



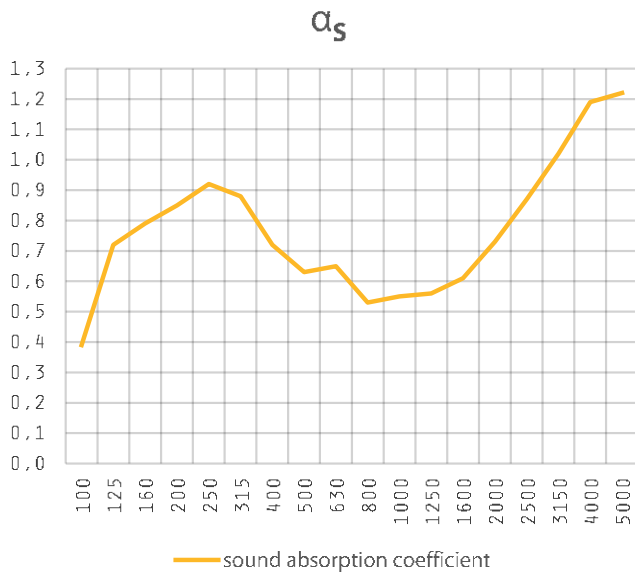
0007



BACK

## SOUND ABSORPTION

on the floor



f(Hz)	$\alpha_s$
100	0.39
125	0.72
160	0.79
200	0.85
250	0.92
315	0.88
400	0.72
500	0.63
630	0.65
800	0.53
1000	0.55
1250	0.56
1600	0.61
2000	0.73
2500	0.87
3150	1.02
4000	1.19
5000	1.22

**ISO 11654**  
 **$\alpha_w = 0.65$  (LH)**